

Donor Honor Roll Issue
Jewish Senior Living

2008/2009



TABLE OF CONTENTS

- 4 ON THE HOME FRONT**
These are both difficult and exciting times at the Jewish Home. Daniel Ruth, Mark Myers, and Arlene Krieger consider the Home today and in the future.
- 7 BACK TO THE FUTURE**
In a high tech world, a simple telephone call can avoid transitional care-related errors.
- 10 A FITTING LIFESTYLE**
The community of Moldaw Family Residences at 899 Charleston is an ideal fit for future resident Lillian Lesnick.

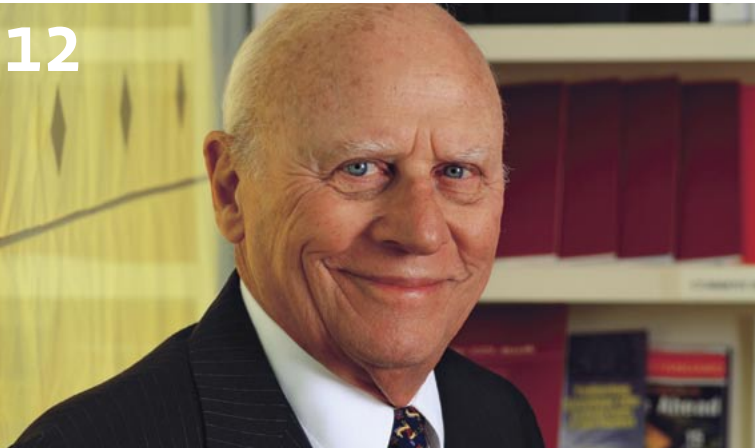
- 20 NOBODY DOES IT BETTER**
Debra Reynolds and Steven Hammerschlag praise the Home's compassionate care.
- 22 ALL IN THE FAMILY**
A second marriage for Ida Schwartz brought a new life at home – and at the Home.
- 24 COMING 'HOME'**
Pictures tell the story of the Homecoming and thank-you event.
- 26 OUR DONORS**
Annual Fund donors demonstrate acts of loving kindness.
- 38 CAPTAIN JULIUS FRIEDMAN SOCIETY**
Remembering the Jewish Home in estate plans is an enduring legacy.

Jewish Senior Living

JEWISH SENIOR LIVING MAGAZINE
2008/2009 vol.3 no.2

A publication of the Jewish Home of San Francisco
302 Silver Avenue / San Francisco, CA 94112 / www.jhsf.org

12



- 12 PROFILE IN COMMITMENT**
Richard Goldman's attention to the Jewish community and the environment yields a new outdoor plaza at the Home.
- 14 LIFE'S A TRIP**
Adelaide Hilp's legacy delivers a breath of fresh air and a change of scenery.
- 16 FOR THE LOVE OF JANE**
Pets and pictures are among Jane Burrows' gifts to the Jewish Home.
- 18 LET'S GET PHYSICAL**
Residents Fred Neustadter and Edie Sadewitz credit their vitality to the Home's new fitness center.

20




- 39 FULFILLING OUR PROMISE**
Comprehensive Campaign donors
- 43 PITCH PERFECT**
No aria is left unheard when opera buff and Jewish Home volunteer Merle Becker shares her passion.
- 45 JEWISH HOME SERVICE VOLUNTEERS**
The Home's corps of active volunteers gives from the heart.
- 46 GIFTS IN KIND**
Acknowledging in-kind gifts and the contribution of services.
- 47 OUR COMMUNITY PARTNERS**
Community organizations and entities partner with the Jewish Home.

22



EDITOR AND PUBLISHER: Sherie Koshover
COPY EDITOR: Ilana Glaun
WRITER: Suzan Berns
CONTRIBUTORS: Mark Denton and Development staff
DESIGNER: Michael Wickler
PHOTOGRAPHER: Alain McLaughlin

COVER PHOTO:
BARBARA HILP SMITH AND HER DAUGHTER, SUSAN SMITH MORRIS.
STORY ON PAGE 14.

 The Jewish Home of San Francisco is a beneficiary agency of the Jewish Community Federation of San Francisco, the Peninsula, Marin and Sonoma Counties.

JEWISH HOME OF SAN FRANCISCO

BOARD OF TRUSTEES
Prior to 2008 Annual Meeting

OFFICERS
Mark Myers, *Chair*
Michael Adler, *Vice Chair*
Jeffrey Farber, *Vice Chair*
Michael Strunsky, *Vice Chair*
Martin Stein, *Secretary*
David Arrick, *Treasurer*

PAST CHAIRS
Leonard B. Berger
James A. Davis, M.D.
David A. Friedman
Frances D. Green
Douglas M. Heller
Arlene E. Krieger
William J. Lowenberg
Victor L. Marcus
Barbara C. Rosenberg, Ph.D.
Richard M. Rosenberg
Stuart W. Seiler

TRUSTEES
Benjamin Anixter
Joan Davis
Benjamin Eisler
Eric Fastiff
Donald A. Friend
Stephan Krieger
Carol S. Roberts
Alan Silverman

Jerry A. Levine, *Executive Director Emeritus*

SENIOR MANAGEMENT

Daniel R. Ruth, *President & Chief Executive Officer*
Edwin Cabigao, *Chief Nursing Executive*
Mark Denton, *Director of Development*
Sherie A. Koshover, *Director of Corporate Planning*
Jay S. Luxenberg, M.D., *Medical Director*
Aileen Munoz, *Director of Human Resources*
Kevin T. Potter, *Director of Finance*
Sandra C. Simon, *Administrator*

JEWISH HOME & SENIOR LIVING FOUNDATION

BOARD OF TRUSTEES

OFFICERS
Arlene E. Krieger, *Chair*
Larry Marks, *Treasurer*
Richard M. Rosenberg, *Secretary*

TRUSTEES
Adele Corvin
Joan Davis
David A. Friedman
Martin Stein
David Steirman

Daniel R. Ruth, *Board Liaison*

MOLDAW FAMILY RESIDENCES AT 899 CHARLESTON

BOARD OF TRUSTEES

David A. Friedman, *Chair*
Michael Adler
Shelley Hébert
Stuart Klein
Larry Marks
Carol S. Roberts
Loren Saxe

Daniel R. Ruth, *President & Chief Executive Officer*



“It’s clear that it’s not possible to rely on state funding. We must develop a new business model that will enable us to diversify and extend how we deliver services.”

– Daniel Ruth, Jewish Home president & CEO



MARK MYERS

“The Jewish Home is embarking on a site re-master plan ... to better serve existing residents and to ensure the future relevancy of the Silver Avenue campus ... as well as the Home’s future financial viability and sustainability.”

– Mark Myers, chair, Jewish Home board of trustees

Q+A: ON THE HOME FRONT

In recent months, the state of California has cut its Medi-Cal reimbursement to the Jewish Home of San Francisco by 10 percent. When this is combined with nearly \$8 million in projected operating losses, it is clear that the Home, as a not-for-profit organization, is facing serious financial challenges. Daniel Ruth, Jewish Home president and CEO, and Mark Myers, chair of the Jewish Home’s board of trustees, look at how the Jewish Home is responding to these realities today and how it is planning to achieve new realities for the future.

Jewish Senior Living:

>>> How is the Jewish Home dealing with this cut in Medi-Cal reimbursement?

DANIEL RUTH

Daniel Ruth: Firstly, I want to assure everyone that the Jewish Home remains 100 percent committed to the care of our residents. The health and welfare of our residents is today, and will remain, of paramount importance. In fact, we have recently increased clinical staffing in areas it is needed.

That said, the impact of such losses in revenue is far-reaching. Since wages and benefits account for 70 percent of our operating expenses, we have found it necessary to reduce non-clinical care staffing in some areas through layoffs, reduced hours, and attrition. We have also pared back the hours of operation of certain non-medical programs, such as creative arts and the garden café. In addition, we are reducing costs in administration, contracting, and purchasing.

Mark Myers: The cuts we are facing this year are simply not sustainable. Eighty-five percent of our residents are Medi-Cal beneficiaries. It is the Home’s primary source of funding. A 10 percent cut

in reimbursement equates to approximately \$4 million in lost revenues at a time healthcare and utility costs are rising.

Daniel Ruth: It’s clear that it’s not possible to rely on state funding. We must develop a new business model that will enable us to diversify and extend how we deliver services. Our new short-term and rehabilitation services unit (STARS) is one step in that direction. This program currently offers 40 beds for patients requiring rehabilitation and temporary skilled oversight after an acute hospital stay, and to this end, we are networking with a number of hospitals to serve their patients’ short-stay needs. We will look to increase the number of beds available for this program over the next 24-36 month timeframe. In addition, our acute geropsychiatric unit will be undergoing a remodel early next year, thanks to a generous grant from the Koret Foundation. These two programs will begin to enable us to serve a broader cross-section of our community.

Mark Myers: Interestingly, this financial crisis has forced us – and enabled us – to look at how we’re serving our community. We’re studying

Jewish Senior Living:

>>> What have you learned?

Daniel Ruth: For one thing, many of the buildings on the Home’s Silver Avenue campus no longer meet the requirements of modern buildings, or perhaps do not best serve the needs of seniors today, which is moving toward nursing homes that serve niche elements and support aging-in-place. The Jewish Home is a 430-bed facility, comprised of buildings constructed from 1923 to our most recent addition, the Barbara & Richard Rosenberg Family Center, which opened in 2007. Some of our older constructions are not energy efficient, and although state-of-the-art when built, by today’s standards their layout does not promote a residential environment nor lend to optimized staffing.

Mark Myers: The Jewish Home is embarking on a site re-master plan, which will create a blueprint for Silver Avenue for the next two decades. Our goals are to better serve existing residents and to ensure the future relevancy of the Silver Avenue campus for our community, as well as the Home’s future financial viability and sustainability.

Daniel Ruth: People are living longer. In fact, the fastest growing sector is in the age 85-plus cohort. We know that government does not have the resources or the commitment to effectively address the challenges of an aging society. That’s one of the reasons the Jewish Home launched a strategic visioning initiative in 2004 – to assess the current and future needs of the Bay Area’s older adults, and to determine the best way to deliver services.

The result of the process was to set a direction for the Jewish Home to become a regional resource providing a continuum of care for senior adults. Moldaw Family Residences at 899 Charleston, located on the Taube Koret Campus for Jewish Life in Palo Alto, will be one part of the network. We will soon affiliate with another highly regarded community partner, Menorah Park, a subsidized senior housing complex in San Francisco, adjacent to the San Francisco Jewish Community Center. Under an emerging new organizational structure, Jewish Senior Living Group and its affiliates – Jewish Home of San Francisco, Jewish Home & Senior Living Foundation, Moldaw Family Residences, Menorah Park, along with future affiliates – will become the ‘central address’ for advocacy and service provision to older Jewish adults throughout the Bay Area.

Mark Myers: The Jewish Home is at a major crossroads in its long and venerable history. Generations of leadership before us have navigated through challenging times, and we will as well. We look forward to our community’s support as together we will succeed in meeting this challenge: providing high quality and cost-effective care and services to a diverse cross-section of our aging community. ■



THIS AUGUST, FOR THE FIRST TIME IN OUR HISTORY, SENIOR MANAGEMENT AND THE BOARDS OF TRUSTEES OF OUR SENIOR LIVING NETWORK – JEWISH HOME OF SAN FRANCISCO, JEWISH HOME & SENIOR LIVING FOUNDATION, AND MOLDAW FAMILY RESIDENCES AT 899 CHARLESTON – CAME TOGETHER FOR A SEMINAL DAY OF LEARNING AND PLANNING.

It was an engaging immersion into understanding the trends in the long-term care industry, and an opportunity to reach consensus on action plans for the future.

“We are already in the process of affiliating with Menorah Park, and are exploring collaborations with key healthcare providers throughout the Bay Area.”

These are both difficult and exciting times, but I came away from the retreat with complete confidence in the Jewish Home’s leadership and its ability to respond to issues resulting from today’s economic climate and changing demographics. And I left filled with excitement about the future for our Jewish community and how it will serve a broader senior population in the years and generations to come.

I am honored by the privilege of working with this dynamic team of leaders in the field of senior care.

ARLENE KRIEGER
Chair, Board of Trustees
Jewish Home & Senior Living Foundation

It was not so long ago that the Jewish Home’s board unanimously endorsed a new strategic vision that creates a regional network of Jewish-sponsored senior living programs, services, and facilities. Through this vision, the Home would become a regional resource, as part of a continuum of housing and care throughout the Bay Area, offering senior adults a variety of life-enriching program and service options. We are already in the process of affiliating with Menorah Park, and are exploring collaborations with key healthcare providers throughout the Bay Area. The Home’s Silver Avenue campus will remain the flagship, the base, and the emotional/cultural epicenter for all our aging initiatives.

The Home is also in the process of creating a new governance structure, Jewish Senior Living Group, which will support the development and effective management of this emerging regional network. Once formed, one of the initial tasks of Jewish Senior Living Group will be to sponsor a regional senior living feasibility analysis to identify and prioritize ‘geographic zones of opportunity’ to further expand the Jewish-sponsored senior living network.

Jewish Home & Senior Living Foundation is closely aligned with Jewish Senior Living Group’s vision as a community resource that will function as a central address for advocacy and service provision to older Jewish adults throughout the Bay Area. The Foundation is supportive of the Group’s goals and objectives, and looks forward to serving as a funding partner to advance its work.

BACK TO THE FUTURE BACK TO THE FUTURE BACK TO THE FUTURE



IN THE HIGH TECH WORLD OF ELECTRONIC COMMUNICATION, IT MAY BE SURPRISING TO LEARN THAT A KEY TECHNIQUE IN THE JEWISH HOME’S NEW TRANSITIONAL CARE MODEL IS DECIDEDLY RETRO: IT IS SIMPLY A TELEPHONE CALL. >>>



“Common knowledge and scientific research have proven that many preventable mistakes happen in transition,” says Dr. Jay Luxenberg, the Home’s medical director. The goal of the Home and its transitional care model is to minimize transition-associated errors.



LEFT: JEWISH HOME SOCIAL WORKER AND DISCHARGE PLANNER TOM COGBURN USES MANY METHODS OF COMMUNICATION, FROM E-MAIL, TO TELEPHONE, TO PEN AND PAPER ... AND SOMETIMES EVEN ALL AT THE SAME TIME.

FACING PAGE: DR. THERESA ALLISON, STARS UNIT DIRECTOR, DISCUSSES MEDICATION RECONCILIATION WITH LIZA ALTMAN, A SHORT-TERM CARE, RUSSIAN-SPEAKING PATIENT. INTERPRETER AMALIYA MELKUMOVA ENSURES THAT NOTHING GETS LOST IN TRANSLATION.

TRANSITIONAL CARE IS THE PERIOD OF TIME WHEN AN INDIVIDUAL TRANSFERS FROM A HOSPITAL TO A NURSING HOME, AND THEN RETURNS TO HIS OR HER PRIVATE RESIDENCE.

Since the Home’s short-term and rehabilitation services unit (STARS) opened nearly a year ago, with the ability to serve 40 patients who are recovering after a hospital stay, transitional care has become more relevant than ever at the Jewish Home.

“Common knowledge and scientific research have proven that many preventable mistakes happen in transition,” says Dr. Jay Luxenberg, the Home’s medical director. “It is a time that is fraught with the potential for error.” The goal of the Home and its transitional care model is to minimize transition-associated errors.

According to Dr. Theresa Allison, director of the STARS unit, medication errors account for a large percentage of the types of mistakes that occur. These are caused, she notes, when communication among all parties involved – hospital and transitional care physicians, recovering individuals, and their relatives or caregivers – is not sufficient. The Jewish Home has set up a series of procedures to ensure that effective

communication does take place.

Allison (an expert in transitional care, according to Luxenberg) is the primary facilitator for the Home’s transitional care model. It is a four-pronged approach, with each prong based on enhancing communication, she explains.

The first step is communication between the doctors – those who are caring for the patient at the hospital and the doctor at the Jewish Home who is taking over.

“Ideally, personal communication on the telephone is best, but sometimes that just isn’t possible,” says Allison. In such cases, she turns to a written report. When the patient is ready to return home, she also talks with their primary care physician, updating him or her on the patient’s condition and medications.

Secondly, there is clear communication with an individual who will serve as the patient’s advocate. This could be a relative or caregiver, or in some cases, even the patient. It must be someone who can understand medication routines and can make contact with the appropriate people in the healthcare system if something requires attention once the patient is discharged.

Careful medication reconciliation is step three. “I try to make their medicines at discharge as close as possible to the medication they were taking before they went into the hospital,” Allison says. In fact, she adds, if she can eliminate some medications – that is, simplify the routine – that is a good thing.

When appropriate, Allison asks families to bring in all the medications in the patient’s medicine cabinet. Together they review them, and unnecessary ones are removed. “The idea is, if there are fewer medicines, there are fewer errors,” she says.

The final step in the transitional care model is to ensure that the door to communication between the Home and the patient is open. Allison and Tom Cogburn, Jewish Home social worker and discharge planner, confirm that patients and their caregivers have contact information for doctors. “We speak with about one-half to two-thirds of the patients after they leave the Home,” Cogburn says.

Transition-associated errors were rare in the past, says Luxenberg, because there was a continuity of professional caregivers at each level of care. In many hospitals now, however, the physician assigned to a patient is a hospitalist – a doctor who takes care of patients only during their hospitalization. Previously,

individuals also remained in the hospital much longer, and thus their care was monitored daily by the same nurses and doctors. Today, hospital stays are quite short-term, and an individual may recover or recuperate in two or three locations.

Luxenberg recalls a time when it was routine to visit a patient at home after discharge. Under the best of circumstances, he says, this procedure would be reinstated and doctors would make house calls, and even check the contents of the patient’s medicine cabinet. Indeed, on Luxenberg’s wish list is a doctor or other professional staff member to visit discharged patients at home.

But for now, he says, “The big bang is just to make the telephone call. It doesn’t sound like rocket science, but the fact is that in most medical facilities nationwide, the phone call doesn’t occur.”

At the Jewish Home, every effort is made to communicate at every stage of the patient’s care – including making the call. ■

The Jewish Home welcomes inquiries about access to its STARS program. For more information, contact STARS admissions coordinator at 415.469.2286.



A FITTING LIFESTYLE

MOLDAW FAMILY RESIDENCES AT 899 CHARLESTON

AT 899 CHARLESTON

Ask Lillian Lesnick what is important to her now at this stage in her life, and you will get a list of answers that includes family, friends, fine arts and music, freedom and free time, and her independence. She knows she has found the community that embraces all she values in the new Moldaw Family Residences at 899 Charleston in Palo Alto.

Lillian has reserved a two-bedroom apartment with a balcony that offers a terrific view of the community courtyard, which will serve as an open-air social center when Moldaw Family Residences opens next year at 899 East Charleston as part of the Taube Koret Campus for Jewish Life. She is looking forward to everything life has to offer at the maintenance-free community, all designed to embrace the full lifestyle she loves.

Lillian will be staying in the area she has called home for 40 years, so her new endeavors complement the numerous activities she already enjoys. Her two daughters live nearby in Campbell and Sunnyvale. She is close to many friends, some of whom are also moving to the new community, and is planning to meet new neighbors.



“The fact of the matter is I became very tired of taking care of the house ... I can’t wait to have less responsibility and more freedom.”

— Lillian Lesnick

“The fact of the matter is I became very tired of taking care of the house,” says Lillian. “I can’t wait to have less responsibility and more freedom. I’m very impressed with the fact that [Moldaw Family Residences] will have many, many activities for me to choose from. I’m a joiner.”

Moldaw Family Residences’ private apartment homes are interspersed in buildings across the campus, so Lillian can step outside her door to enjoy a cultural performance or lecture through the adjoining Schultz Cultural Arts Center, or a fitness class at the Goldman Sports and Wellness Complex.

“I prefer getting together for concerts, theater, and other artistic outings,” says Lillian, who recently went to an exhibit at the de Young museum in San Francisco and to see Cirque du Soleil. “The JCC is offering some classes that I’ve signed up for. I’m really looking forward to living in a community that’s familiar to me.”

Lillian’s lifestyle has certainly changed since first settling in California in 1965 with her family. Born in Latvia, she lived in eight different countries as a child growing up against the backdrop of World War II. After coming to the United States, she met her late husband, Leonard, while he was in the Air Force. They lived in Cleveland, Ohio, before being drawn to and staying in California after their first visit.

Right now, construction crews are building Lillian’s new home. Workers are currently finishing exteriors of many buildings that make up the community, as well as completing much of the campus’s captivating features.

Select apartments that overlook the courtyards, commons, landscaped gardens, and pedestrian pathways and bridges that distinguish the beautiful eight-acre campus are still available. For more information on how the community fits your lifestyle, please call 650.321.3188 to arrange a personal visit at Moldaw Family Residences’ preview center at 366 Cambridge Avenue in Palo Alto. Community information is also available at www.899charleston.org. ■



TALENTED, DEDICATED PARTNERS BRING UNIQUE CONCEPT IN COMMUNITY LIVING TO LIFE IN THE SOUTH PENINSULA

It is personally exciting and gratifying to be afforded the opportunity to collaborate with so many talented and passionate individuals dedicated to bringing the Taube Koret Campus for Jewish Life from vision to reality.

Moldaw Family Residences will be the first senior living community with a Jewish orientation in the South Peninsula. We are proud to be creating a unique concept in community living for older adults. On the Taube Koret Campus, we are developing an innovative complex of apartment homes that reflects a new trend in serving the housing and social needs of older adults. Rather than restricting ourselves to being a seniors-only community, the homes we are building for older adults are smartly designed into a neighborhood to facilitate healthful aging, while providing meaningful, multigenerational interaction through our close association with a Jewish Community Center. We are creating a dynamic lifestyle for seniors in a terrific climate, an excellent location, and a great community.

Construction is rapidly progressing and we are on schedule to open in fall 2009. I want to take this opportunity to acknowledge and thank my fellow Moldaw Family Residences’ board members for their spirited commitment to serving: Michael Adler, Shelley Hébert, Stuart Klein, Larry Marks, Carol S. Roberts, and Loren Saxe.

This project would not be possible without the extraordinary leadership of countless individuals and the overarching support of the community at large. To date, donors have generously provided more than \$135 million toward the Campus’ minimum campaign goal of \$140 million. Bond financing has allowed us to move forward with construction, but we still have additional funds to raise. Now we are asking the entire community to help us reach our campaign goals. By partnering with us, additional community members can share ownership and responsibility for this wonderful new community destination. We invite you to join us on the next part of our collective journey. Your support will strengthen our momentum as we approach the finish line, and will ensure that the Taube Koret Campus for Jewish Life will become an indispensable, central community institution.

DAVID FRIEDMAN
Chair, Board of Trustees
Moldaw Family Residences

THANKSGIVING WEEKEND OPEN HOUSE AT PREVIEW CENTER

If you are Interested in
Moldaw Family Residences,
please stop by our
preview center open house.

Friday, November 28
11:00 a.m. to 2:00 p.m.
366 Cambridge Avenue, Palo Alto

FAMILY AND FRIENDS WELCOME

LILLIAN LESNICK AND HER DAUGHTER, DIANE.

MOLDAW FAMILY RESIDENCES

PROFILE IN COMMITMENT

SITUATED IN THE COURTYARD BETWEEN THE JEWISH HOME'S COLUMNED ENTRYWAY AND THE BARBARA & RICHARD ROSENBERG FAMILY CENTER IS THE BEAUTIFUL NEW RICHARD N. GOLDMAN FOUNDER'S PLAZA – A PERFECT PLACE FOR RESIDENTS TO RELAX IN THE SUN, GET SOME FRESH AIR, AND ENJOY EXPERIENCING THE WORLD AROUND THEM.

RICHARD N. GOLDMAN

It is not surprising that Richard Goldman (who, together with his late wife, Rhoda, established the prestigious Goldman Environmental Prize) would choose to provide an outside area for residents of the Jewish Home. "We believe in paying attention to the environment, so given a choice, we tend to lean toward the outdoors," Goldman explains.

It is also not surprising that he would choose to support the Jewish Home. "I know the comfort it provides people and their families when they move into the Jewish Home," he says. "I've known the leadership for many years and have great respect for them. They work hard and are diligent about what they do. And they are very successful."

Goldman has supported the Jewish Home for many years. Perhaps the most public support is the series of ads that the Richard and Rhoda Goldman Fund has underwritten in *J*, the Jewish news weekly of Northern California (formerly the *Jewish Bulletin*) for nearly 25 years. Each features the artwork of a Jewish Home resident. Through these ads, Goldman says, attention is being paid to the residents of the Home, as well as to the creative arts program – one of the many ways the Home enriches residents' lives.

"The Jewish Home is as fine a facility of its nature as exists," he says. "It makes a lot of residents' lives more meaningful as they go into their so-called 'golden years.'"

As a prominent San Francisco philanthropist, Goldman and the Goldman Fund are dedicated to supporting Jewish affairs and environmental causes, along with population issues, Israel, and the Bay Area, where Goldman was born and has lived all his life. The Goldmans established the Richard and Rhoda Goldman Fund in 1951, a few years after Richard completed service in the Army and founded his company, Goldman Insurance.

"My late wife and I wanted to leave the world a better place than we found it," he says about their reasons for choosing to give. "I can't think of anything more vital than that."

An adult during World War II, Goldman recalls being shocked when he learned what happened to Europe's Jews. "My wife and I made up our minds

early on to do whatever was necessary to prevent it from happening again." Subsequently, Israel and the Jewish community have been key areas of support.

While his wife, who died in 1996, was his original philanthropic mentor, today, Goldman admits, there are numerous people who inspire him. "They keep changing. There are many things people are doing that I'm impressed by," he says, noting that those people include his staff and his children.

His children, Goldman believes, are leading *their* children by example. His sons, John and Doug, are active community leaders in the Bay Area where they live, as is his daughter, Susie, who lives on the East Coast. There are 11 grandchildren, ranging in age from 18 to 32, who are "anxious to carry on our work," he says.

And that reassures Goldman the philanthropy he and his wife initiated will be sustained. ■



RICHARD N. GOLDMAN FOUNDER'S PLAZA, SITUATED IN THE JEWISH HOME'S COURTYARD.

"My late wife [Rhoda] and I wanted to leave the world a better place than we found it," Richard Goldman says about their reasons for choosing to give. "I can't think of anything more vital than that."

LIFE'S A TRIP

WHEELCHAIR-BOUND IN THE LATER YEARS OF HER LIFE, THERE WAS NOTHING ADELAIDE 'ADDIE' HILP ENJOYED MORE THAN TO BE TAKEN FOR A RIDE TO GET FRESH AIR AND A CHANGE OF SCENERY, RECALLS HER DAUGHTER, BARBARA HILP SMITH.

These excursions meant so much to Addie that she decided to make it possible for others to have the same opportunity. In her estate plans, she

set up the Adelaide and Harry Hilp Fund at the Jewish Home that would provide trips and outings for residents. Since her death in 1983, hundreds of Jewish Home residents have benefited from her generosity.

The Jewish Community Endowment Fund (JCEF) of the Jewish Community Federation of San Francisco, the Peninsula, Marin and Sonoma

Counties also understands the importance of such excursions. Through a grant from the JCEF's Clo Merle Community-Wide Senior Excursion Fund, the JCEF has expanded the opportunity even further.

"We're extremely grateful to Adelaide Hilp and the Federation's Endowment Fund for their support to our residents," says Mark Myers, chair of the Home's board of trustees. "Social and intellectual stimulation are crucial to seniors' quality of life. Remaining active, participating in interesting and enjoyable activities, and being involved in what the larger community offers benefit our residents by keeping them engaged."

"Addie loved to go down the Peninsula to eat a nice lunch. Or perhaps drive to the beach, across the Golden Gate Bridge to Marin County or downtown," remembers Barbara. "She knew there were residents of the Home who didn't have friends or family to take them out, so she wanted to make that possible."

Adelaide Wollenberg Hilp was born in Roseburg, Ore., in 1893, and moved to San Francisco with her parents when she was 9. Her father had emigrated from Germany in 1865, and became a successful banker in Oregon. Addie went to school in San

Francisco, met Harry Hilp, a San Francisco native, and married him in 1916 at San Francisco's Temple Emanu-El. Harry (a partner in the firm Barrett and Hilp, one of the original contractors of the Golden Gate Bridge) and Addie had three children: Barbara Hilp Smith, Harry Hilp Jr., and Marjorie Hilp Rhodes. Barbara, the only surviving child, is the mother of Susan Smith Morris.

Harry and Addie believed strongly in giving back to the community. In her younger days, Addie worked for the Red Cross and donated her time to other organizations.

"My father was a prominent man," Barbara relates. "His involvement in the community



included many charities, but the Jewish Home was my mother's charity. She wanted to do something in the Jewish community, and the Home was special to her." Addie used funds left to her by her father to establish the Adelaide and Harry Hilp Fund.

Over the years, Addie's children – the Hilp, Smith, and Rhodes families – have contributed generously to the fund. Thanks to Addie and her family, Jewish Home residents have enjoyed scenic 'brown bag lunch' rides across Bay Area bridges, tours through residents' former neighborhoods, visits to restaurants and ice cream parlors, and so much more.

That is precisely what her mother had in mind, affirms Barbara. ■



ABOVE: ADELAIDE AND HARRY HILP SR., CIRCA 1958.

RIGHT: A GROUP OF JEWISH HOME RESIDENTS POSE IN FRONT OF DALE CHIHULY'S GLASS SCULPTURE, SUN, BEFORE ENTERING THE LEGION OF HONOR TO VIEW AN EXHIBIT OF THE DEAD SEA SCROLLS AND ANTIQUITIES.



BARBARA HILP SMITH

FOR THE LOVE OF JANE

JANE BURROWS WALKS INTO A JEWISH HOME CONFERENCE ROOM WITH HER FRIEND, LULU, WHO CAREFULLY SURVEYS THE PLACE.

Lulu, an adorable and well-behaved Pekinese mix, is one in a long line of Jane's dog friends. But to the Jewish Home and to Sherie Koshover, the Home's director of Corporate Planning, the variety of birds, rabbits, and other 'pets' that have kept company with Jewish Home residents for almost two decades now may be attributed to Jane's love for dogs.

It was Jane who was Koshover's staunchest ally when, some 20 years ago, she lobbied then executive director Jerry Levine to allow assorted animals (fostered through the San Francisco's SPCA animal-assisted therapy program) to be housed at the Home for the welfare and benefit of residents, staff, and visitors.

"Jerry and I had go-rounds," Jane recalls. But ultimately she prevailed, and convinced him a small menagerie would be an excellent addition. In her honor, Koshover named the first animal – a rabbit – 'Jane.'

in the clinics, at the dentist. Or a doctor listening to a resident's heart. I photographed staff in the kitchen or in the creative arts studio," Jane recalls. Candid images of volunteers and families interacting with residents and staff were among the hundreds captured. For many years, the photographs were prominently displayed as large two-by-three-foot blowups in the corridors of the Home as part of a changing "Day in the Life" exhibit.

To find the perfect light or point of view, no location was off-limits. "We even climbed onto the Home's roofs and explored the lower basement levels," says Koshover. One of their many projects was a photo journal created for Admissions' social workers, which they used as a visual orientation guide to the Jewish Home when they made home visits to prospective residents.

When Sumner became ill in the mid-1990s, he moved into the Jewish Home, and Jane, their three

... the variety of birds, rabbits, and other 'pets' that have kept company with Jewish Home residents for almost two decades now may be attributed to Jane's love for dogs.

At the time, Jane was a frequent visitor to the Home, documenting daily life and activities with her camera. For 23 years, her photography graced the walls of the Home and pages of its brochures and publications.

Jane's relationship with the Home began in 1978 after the death of her best friend. The two had worked together at Saks Fifth Avenue, and when she died, Jane decided not to continue the job. Jane's husband, Sumner Burrows, was serving on the Home's board of directors and suggested that she speak with Sidney Friedman, executive director at that period, to see "if he needed someone to do something," she remembers.

He did, and a match was made. Yet Jane did not want to be a volunteer. "I'll never forget; I said, I'll do it, but I want to be paid a monthly stipend – and I'll give the money back to the Home at the end of the year."

"Jane became my colleague, my comrade," says Koshover. The two set off to capture images of all the departments and people at the Jewish Home.

"I took pictures of residents in physical therapy,

children, Lynn Bunim, Nancy Jones and Steven Burrows, and their families experienced the Home in a new way – as the family of a resident. Jane remembers celebrating Thanksgiving there, bringing a turkey and trimmings to a Friedman Pavilion sitting room.

The Burrows family has established two funds at the Home, one to enrich the holdings of the library, the other to promote the continuing professional education of the Home's nursing staff.

A third-generation San Franciscan and a graduate of Stanford University, Jane is a tennis enthusiast (she cut short watching a televised professional match to be interviewed) and at 87, still travels. A trip to Dubai, Amman, and Singapore is on the horizon. She has seven grandchildren and, she proudly announces, a new great-grandchild.

"They're all girls. No one knows how to make boys," she quips. ■

GETTING A HUG FROM JANE BURROWS IS LOLA, ONE OF THE JEWISH HOME'S RABBITS-IN-RESIDENCE. IT IS PARTLY THANKS TO JANE'S LOBBYING THAT VARIOUS SMALL ANIMALS HAVE A HOME AT THE HOME.



JANE BURROWS

LET'S GET PHYSICAL

SIEGFRIED 'FRED' NEUSTADTER AND EDIE SADEWITZ ARE SERIOUS USERS OF THE JEWISH HOME'S NEW STATE-OF-THE-ART HERBST FITNESS CENTER.

In fact, the two are among the Home's many residents who attribute their well-being in part to an exercise routine they follow like clockwork.

Located on 'Main Street' in a newly-renovated area of the Home, the fitness center is filled with a variety of senior-appropriate workout equipment. At most hours throughout the day, the treadmills, recumbent bicycles, weight-resistant machines and other apparatus are in use, providing daily exercise and prescribed rehabilitation routines.

Named in recognition of the Herbst Foundation, which sponsored the development of the space, the Jewish Community Endowment Fund's Maimonides Fund has underwritten the fitness center's staffing for its first two years of operation. Records maintained by staff demonstrate that it is never too late for the elderly to reap the benefits of exercise to improve their functionality and increase their independence. The typical user of the center has seen a 24 percent increase in his or her strength and a 153 percent increase in endurance over a 12-week period.

"The fitness center is a tremendous addition to what the Home offers," says Fred Neustadter. "Its benefits can't be overestimated. Everyone I talk to agrees."

Eighty-five-year-old Fred works out five or six days a week for approximately an hour at a time, using six different machines under the supervision of the fitness center's manager. His workout, he says, sufficiently lowers his blood pressure so he need not take as many pills to control it. "The less the better," he comments. He also ascribes the management of his adult-onset diabetes to his daily workouts.

Before moving to the Home, Fred, a retired mathematics professor who held teaching positions at Harvard, Massachusetts Institute of Technology and San Francisco State, was an inveterate walker. "I didn't have a car so I did most things, such as errands, on foot, walking for about an hour and a half a day. I also lifted weights at home," he remarks.

RIGHT: MAINTAINING A CONSISTENT EXERCISE ROUTINE AT THE FITNESS CENTER HAS ENABLED EDIE SADEWITZ TO ELIMINATE MOST OF HER SCIATICA-INDUCED PAIN AND AVOID SERIOUS SURGERY.

BELOW: "USE IT OR LOSE IT," FRED NEUSTADTER SAYS ABOUT KEEPING HIS MUSCLES AND BODY STRONG. A GOOD WORKOUT HAS HIM REALIZING HIS GOAL.



The typical user of the Herbst Fitness Center has seen a 24 percent increase in his or her strength and a 153 percent increase in endurance over a 12-week period.

Fred's mother, Caroline Neustadter, lived at the Home for the final five years of her life, so he was quite familiar with the facility when, following a stroke in 1997 and again in 2001, he recovered at the Home. Fred took up permanent residency in March 2007, realizing the care he would receive was what he needed. The fitness center was a key factor in his decision-making.

"Use it or lose it," Fred says about keeping his muscles and body strong. And the fitness center enables him to do exactly that: use it.

A chronic bout of sciatica almost waylaid Edie Sadewitz, but a consistent exercise routine at the fitness center has enabled her to eliminate most of the pain, and avoid surgery.

Edie woke up one morning in July 2007 with intolerable pain in her right leg. After an MRI at UCSF's spine clinic, she was told the bad news: she

needed emergency fusion surgery.

Formerly an avid golfer and athletically inclined, Edie was already accustomed to taking advantage of the fitness center. She decided to get a second opinion before accepting the surgeon's recommendation, and while waiting for an appointment, asked then fitness center manager Samantha to develop an exercise regimen for her.

"By the time I saw a surgeon for a second opinion, I was doing so much better," Edie reports. "He had me walk on my toes and bend over. He was quite impressed with my flexibility.

"I'm so grateful for the fitness center and the donors who have made it possible," she concludes. "Having access to equipment and expert staff on-site has helped me avoid serious surgery that wouldn't have guaranteed my recovery." ■

NOBODY DOES IT BETTER

“I ALWAYS THOUGHT NO ONE COULD DO IT LIKE I COULD,” SAYS DEBRA REYNOLDS.

Debra is talking about taking care of her mother-in-law, Ilse Hammerschlag, who has lived at the Jewish Home for six years.

When Debra and her husband, Steven Hammerschlag, realized Ilse’s dementia had reached the point where they could no longer give her the care she needed, they began looking for help. The Jewish Home of San Francisco was not on their radar, but when they heard about it, they began investigating.

“Once we toured the Home and learned what it had to offer, we knew it was the best place for Ilse,” Debra says. “We spent most of her first day as a resident with her, but when we left, we didn’t feel heavy. Our thoughts were, she’s safe, she’s in good hands. I knew I couldn’t do what the staff at the Home could do. It was kind of an awakening.”

Before she was ill, Ilse went to the opera and ballet. “She was elegant and refined; someone who influenced you,” Debra recalls. That is one reason the monthly birthday luncheons at the Home are particularly meaningful for Debra.

“Ilse is dressed so nicely, with her scarf and lipstick in place. She probably doesn’t know what’s going on, but perhaps she recognizes the fact that she’s being celebrated – and that’s wonderful.”

As dedicated Jewish Home advocates and cheerleaders, Debra and Steven have taken on the challenge of developing support for the Home’s *Forsake Me Not* and Annual Fund campaigns. Debra participates in phone-a-thons, contacting people in the local community to ask them to contribute to the Home. The couple has also written appeal letters to potential donors.

As dedicated Jewish Home advocates and cheerleaders, Debra and Steven have taken on the challenge of developing support for the Home’s *Forsake Me Not* and Annual Fund campaigns.

In the years of visiting Ilse, Debra and Steven have seen a lot, and some of it has been bittersweet.

“We’ve seen residents age and their conditions change over time, but it’s always been with dignity,” says Debra. And they have observed the compassionate care each resident receives.

“An occasional visitor may not get to see the heart and the genuineness of the staff, or the gentle, special things they do. The blush is put on, eye makeup, hair is styled or combed. They do it because that’s how they feel about the residents.

“Every resident has a story,” she continues. And with those like Ilse, with dementia, you may get a glimpse of it when a usually quiet resident responds to a Jewish melody in the Home’s synagogue, for example.

“It is part of abiding by God’s commandment to ‘honor thy father and thy mother,’” they believe.

If Debra has one frustration, it is that more people do not recognize what an outstanding facility the Jewish Home is. She is determined to keep spreading the word.

“How can you not love a place that is so reverent of older people? If they knew, they’d give. They would appreciate how important it is to do so.” ■

DEBRA REYNOLDS AND STEVEN HAMMERSCHLAG KNOW THAT STEVEN’S MOTHER, A RESIDENT OF THE JEWISH HOME FOR THE PAST SIX YEARS, IS IN GOOD, CARING HANDS.



ALL IN THE FAMILY

IDA SCHWARTZ



The Jewish Home and its Auxiliary were an important part of Ida's life for some 30 years. Today, she says, her closest friends are those she met through the Auxiliary.

ONCE MANAGER OF THE GIFT SHOP – IN ADDITION TO THE MANY OTHER ROLES SHE PLAYED IN THE JEWISH HOME'S AUXILIARY – IDA SCHWARTZ CANNOT RESIST REARRANGING THE MERCHANDISE IN THE HOME'S NEW BOUTIQUE.

WHEN IDA SCHWARTZ MARRIED HER LATE HUSBAND, ARTHUR, SHE GOT A BONUS – AN INTRODUCTION TO THE JEWISH HOME'S AUXILIARY, COMPLIMENTS OF HER NEW MOTHER-IN-LAW, LUCILLE GABRIEL.

"I lost my first husband in 1964," Ida says. "When Arthur and I got married four years later, I inherited his family. It was great."

Thanks to Lucille, the Home and its Auxiliary gained in Ida an ardent volunteer, a two-term president, and a manager of the gift shop. Her involvement yielded a surprise benefit to Arthur, too: he had an excuse to buy a pick-up truck, "one of his suppressed desires," she laughs.

"We would receive enormous donations for the gift shop from the Koret clothing company through the generosity of the late Joe Koret, and then later, thanks to the generosity of

Allan Byer, from Byer California. We'd have to make several trips, filling our car each time, to pick them up." With the arrival of Arthur's new truck, they could pick up the full load in just one trip.

The Jewish Home and its Auxiliary were an important part of Ida's life for some 30 years. "Everyone was extremely nice," she reflects about first getting involved at the Home. Today, she says, her closest friends are those she met through the Auxiliary.

"I can't tell you how many Auxiliary members came in four or five times a week. If something needed to be done, we didn't have

to look too far for volunteers," Ida recalls. "I was always on some committee. I called people and encouraged them to be donors for our annual gala. I did filing, and generally helped with whatever was needed."

While a member of the Home's Auxiliary, Arthur's mother, Lucille, initiated the monthly birthday luncheons for residents. Ida and Arthur began sponsoring birthday luncheons each May – Lucille's birthday month – in her honor. Ida continues to sponsor them today.

A native of Detroit, Ida moved to San Francisco with her family at age 11, where she lived until recently. She graduated from high school at 16 and lied about her age so she could get a job. At 18, she married. Her daughters,

Diane and Debra Estrin, are attorneys who live in San Francisco, while her son, Richard Estrin, a blues harmonica player, lives in Sacramento.

Now 86, Ida sold her San Francisco house to her youngest daughter and moved to a retirement community in Millbrae three years ago, where there is "something going on all the time. I'm quite busy."

She still drives, making trips as far as San Jose. "I'm stubborn," she chuckles. "I feel fortunate that I can still drive. I won't give in because I'm 86. I told my kids, 'If I don't know when to quit driving, I want you to tell me.' I have great kids. They'd be diplomatic, but suddenly I wouldn't have my car keys." ■



Coming 'Home'

SUNDAY, MAY 4, 2008 WAS HOMECOMING AT THE JEWISH HOME – A GATHERING TO THANK CURRENT AND FORMER TRUSTEES, VOLUNTEERS, CONTRIBUTORS, AND AUXILIARY MEMBERS. Guests assembled in the Lynne & Roy Frank Family Lounge to bless the bread and wine, and reunite with old friends, before moving into the Barbara & Richard Rosenberg Family Center for a delicious brunch. Attendees learned about the latest developments at the Home, and enjoyed a tour of our new facilities.



GUESTS ENJOYED A TOUR OF THE NEW BARBARA & RICHARD ROSENBERG FAMILY CENTER. IT INCLUDED A STOP AT THE HOME'S NEW SYNAGOGUE, WHICH IS EQUIPPED WITH A WHEELCHAIR-ACCESSIBLE BIMAH.



EVELYN BLACK AND DOROTHY ROSENTHAL SHARE A MOMENT WITH DR. JAY LUXENBERG. BOB SLESNICK IS AT CENTER.



LOIS FRIED, FORMER AUXILIARY PRESIDENT, HAPPILY ANTICIPATES THE DELICIOUS BRUNCH.

DR. JAY LUXENBERG, THE HOME'S MEDICAL DIRECTOR, AMUSES THE CROWD WITH AN ANECDOTE ABOUT NEW MEDICAL TREATMENTS. (YES, LAUGHTER IS GOOD MEDICINE!)



DOROTHY SAXE IS PICTURED WITH FRANCES GREEN, LONGTIME FRIEND AND FIRST WOMAN PRESIDENT OF THE JEWISH HOME.



CLYDE AND MURIEL FOX, SUPPORTERS OF THE JEWISH HOME SINCE 1970.



AS A NOT-FOR-PROFIT ORGANIZATION, THE JEWISH HOME OF SAN FRANCISCO RELIES ON COMMUNITY GENEROSITY to maintain the high standard of its care and services. Contributions to the Jewish Home's Annual Fund fuel the heart and soul of our community's promise to honor our mothers, fathers and elders, and responds to one of the basic tenets of Judaism, *tzedakah* or righteous giving.

Your contribution to the Annual Fund helps us provide our residents with the highest quality, state-of-the-art medical care through our on-site clinics, nurtures their spiritual needs, and supports our creative arts, music concerts, nutritional services, and lifestyle-enhancing programs.

We are home to more than 420 deserving individuals, each with their own significant life stories. But they all have one thing in common: they have reached a time when they need care, which our remarkable staff provides consistently and compassionately, whenever and wherever it is needed.

With your meaningful support, the Jewish Home will remain that very special place that our community has known and trusted for 137 years. A home that provides each and every one of our residents with what they so richly deserve – the very best in loving care and the utmost in human dignity.

Your tax-deductible gift to the Jewish Home not only demonstrates how much you care, but it is also truly *g'milut chasadim* – an act of loving kindness.

No gift is too small and every contribution is greatly appreciated.

RESIDENT ARTWORK AND THE CREATIVE ARTS PROGRAM
ARE SUPPORTED IN PART BY CONTRIBUTIONS TO THE ANNUAL FUND.

SUPPORTING EXCELLENT CARE

"My sister was a patient at the Jewish Home. She received the most remarkable care from the most caring and professional staff I have ever seen. I am in awe of those wonderful people and what they do, and what you do." –Michel Elkaim

With a contribution of \$5,000 you help support our on-site medical and dental clinics. Our in-house team of physicians is at the Home six days a week, which means our residents do not have to travel to a doctor off-campus, and then wait to be seen and cared for by strangers. Our 13 on-site clinics offer eye care, dentistry, physical therapy, cardiology, podiatry, acupuncture, and therapeutic massage, among others.

THE TREE OF LIFE

"As my ancestors planted for me before I was born, so do I plant for those who will come after me." –Talmud, Ta'anit 23a

The Tree of Life is a beautiful wooden sculpture that hangs prominently in the Jewish Home. Each leaf on the tree bears an inscription as a tribute or memorial to a loved one. Leaves may be purchased for a \$1,800 gift to the Home. A certificate acknowledging the Tree of Life gift is provided to the donor or sent to the honoree as directed.

SPONSORING BIRTHDAY CELEBRATIONS

"Every year, for the past seven years, we have sponsored a birthday luncheon for the residents. Everyone deserves to have a birthday party. And it is so fulfilling to look around and see the joy on the residents' faces." –Marilyn and Bill Sugar

With a contribution of \$500, you can support this joyous event and ensure that our residents celebrate their special days in style. As the birthday host, you too are honored, and receive eight invitations so that your family and friends may attend to celebrate with the residents. There is live music, a raffle, even some dancing, and, of course, an opportunity to join in the singing of "Happy Birthday." This gift is so meaningful for it honors those individuals who are very dear to all of us – the Home's residents.

TRIBUTES TO FRIENDS AND FAMILY

"Whatever the occasion – a celebration or a memorial – we appreciate being able to send a card from the Jewish Home. Not only are these beautiful cards created by the residents, but we know our gift supports the Home's seniors." –Lois and Julian Rhine

Those who wish to honor an important occasion or the memory of a loved one are invited to use the Home's tribute card service. With a gift of \$18 or more, the Home sends a beautiful card, created from art produced by our Jewish Home residents, to the individual who should know of your generosity and caring. With a \$100 donation or more, the loved one's and the donor's names are inscribed in Home's *Tribute Book*.

MULTIPLY THE IMPACT OF YOUR GIFT!

Many companies match charitable contributions made by their employees or employees' spouses. Matching programs can double – sometimes triple – the value of your gift.

For information about giving to the Jewish Home, please contact Susan Morenstein, family & community gifts officer, at 415.406.1458.

GIVING CIRCLES:

HOPE CIRCLE	\$25,000+
BUILDER'S CIRCLE	\$10,000 - \$24,999
PRESIDENT'S CIRCLE	\$5,000 - \$9,999
GOLD CIRCLE	\$2,500 - \$4,999
SILVER CIRCLE	\$1,000 - \$2,499
HONOR CIRCLE	\$500 - \$999
MITZVAH CIRCLE	\$100 - \$499
CHAI CIRCLE	\$1 - \$99

THE FOLLOWING NAMES REFLECT GIFTS RECEIVED FROM JULY 1, 2007 THROUGH JUNE 30, 2008. DONORS WHO HAVE AN ASTERISK FOLLOWING THEIR NAME HAVE GIVEN TO THE JEWISH HOME'S ANNUAL FUND FOR 5 YEARS OR MORE.

HOPE CIRCLE

Barbara and Gerson Bakar*
 Linda and A.J. Batt*
 Biederman Trust
 Jean and William Coblentz
 Philanthropic Fund of the JCEF*
 Esther Wollner Daniel Trust
 Joan and Charles Davis*
 Lynne Frank*
 Heinz Frankenstein*
 Paulette Meyer and David Friedman*
 Pauline Friedman Trust
 Phyllis K. Friedman*
 Ira and Leonore Gershwin
 Designated Philanthropic Fund
 – Jean and Michael Strunsky*
 Lisa and Douglas Goldman
 Marcia and John Goldman*
 Nancy and Stephen Grand
 Philanthropic Fund
 Jewish Community Endowment
 Maimonides Fund*
 Jewish Community Federation
 Annual Campaign*
 Koret Foundation*
 Cathy and Jim Koshland
 Arlene and Steve Krieger*
 Kurland Family Foundation
 Jack Langsam Foundation*
 Fred Liebscher Trust
 Mount Zion Health Fund of the JCEF*
 Barbro and Bernard Osher*
 Amy and Joshua Rassen
 Shirley Reich Charitable
 Remainder Unitrust
 The Rosenberg Family*
 Barbara and Richard
 Lisa and Peter
 Ellen and Michael
 Mark Ross Foundation
 – Mina Vitlin, Annag Chandler
 and Victor Vitlin*
 The Michael Schachter
 Special Needs Trust
 Estate of Margaret Munzika
 and Henry Shweid
 Roselyn Catz Sommer
 Charitable Remainder Trust
 Wells Fargo Foundation
 Estate of Diana Whiteman
 Jean G. Zemel*

BUILDER'S CIRCLE

Cecilia Bieber Trust
 Elaine and Neil Blumenthal*
 Drs. Claire T. and James A. Davis*

Shirley and Ben Eisler*
 Friend Family Foundation
 – Elinor Friend*
 Don and Janie Friend Family
 Philanthropic Fund*
 Michelle and Robert Friend*
 Gaia Fund
 Gerald I. Ganz*
 Frances and Theodore Geballe*
 Richard and Rhoda Goldman Fund
 – Richard N. Goldman*
 Evelyn and Walter Haas Jr. Fund*
 Debra Reynolds
 and Steven Hammerschlag*
 Fred M. Levin and Nancy Livingston,
 The Shenson Foundation
*In memory of Ben
 and A. Jess Shenson**
 Alexander M. and June L. Maisin
 Foundation of the JCEF*
 Nicky and Jerome A. Manning*
 Nanette Moss Trust
 Eleanor Myers*
 Jamie and Mark Myers*
 Lea and Allen Orwitz*
 Mary A. and Patric T. Powell*
 Gerry Regensburger*
 Carol S. Roberts*
 Estate of Blanche
 and Charles Rosen
 Ruth Ann Rosenberg*
 Fern and Daniel Ruth*
 The San Francisco Foundation*
 Carole and S. Richard Shostak*
 Marlene and Martin Stein*
 Wallis Foundation
 – Michael L. Sack*
 Lawrence Weissberg Foundation*
 Alice J. Zeman 2006 Revocable Trust

PRESIDENT'S CIRCLE

Martha and Michael W. Adler*
 Patty and Benjamin Anixter*
 Andi and David Arrick*
 Estelle Bardoff*
 Rickie Ann and Richard Baum*
 Susanne C. Baum*
 Jane T. Burrows*
 Marian and Allan Byer*
 Eleanor and Jonathan Cohen
 Debra and Barry Cohn
 Adele Corvin*
 Cupertino Electric, Inc.
 Barbara and Jeffrey Farber*
 Rebecca Arons and Eric B. Fastiff*
 Bonnie and Wesley Fastiff*
 Miriam and Arthur Gauss*

Eve Bernstein and Alex Gersznowicz*
 Frances and William Green*
 Marsha M. Jacobs*
 Jewish Community Endowment Fund
 – Senior Excursion Fund
 Jewish Community Endowment
 Newhouse Fund*
 Susie Julius*
 Susan and Stephen Kellerman
 Keren Keshet
 – The Rainbow Foundation
 Hedi Langfelder*
 Local Independent Charities*
 Moshe Mandelman
 Rafael Mandelman
 Judith and Melvyn Mark*
 Anita and David Markham*
 Pell Family Foundation
 – Eda and Joseph Pell*
 Peter A. Pollat, M.D.*
 The Lisa and John Pritzker Family
 Rose and Theodore Rosenberg
 and Family*
 Eleanor and Paul Sade*
 Dorothy and George Saxe*
 Margaret Schink
 Adrienne and Norman Schlossberg*
 Ida E. Schwartz*
 Seiler & Company, LLP*
 LaVerne and Alan Silverman*
 Matt Slepkin, Diane Olmstead,
 Sarah Olmstead, and Cali Slepkin*
 Roberta Agre and Allan Sluizer*
 Steinberg Architects
 Anne and David Steirman*
 Estate of Margot Julie Stern
 Edna J. Stewart*
 Dorothy R. Vogel*
 Webcor Builders
 Henry Weil*
 Dana Corvin and Harris Weinberg*
 Wells Fargo
 Community Support Campaign*
 Bobbi and Herb Wiltsek*
 Anita and Ronald Wornick*
 Anonymous (1)

GOLD CIRCLE

Allied Irish Bank
 Susan and Sigmund Anderman*
 Bi Rite Foodservice Distributors
 Susan Bloch*
 Katherine Browning
 Cain Brothers
 Mark Denton
 Miriam F. Friedman*
 Patricia and David Giuliani

Joanne and Stanford Green*
 Liane Ofenham-Hall and John Hall*
 Hanson, Bridgett, Marcos, Vlahos
 & Rudy, LLP
 IBM Matching Grants Program*
 Barbara and Ronald Kaufman
 LaSalle Bank
 The Richard and Emily Levin
 Foundation*
 Marilyn and Michael Levy*
 Manatt, Phelps & Phillips, LLP
 Deanna Mann
 Dina and Sidney Marchasin*
 Esther Marcus*
 Martin L. Marimont
 Pamela and Stephen Mittel*
 Montgomery Corporation*
 Juel Morris*
 Michael M. Ofenham
 Lois and Fred Pavlow*
 Bonnie and Donald Pearlman*
 Linda and Edward Plant*
 Estate of Marjorie Rosenthal
 Barbara and John Rosston*
 Jeanette and Jeffrey Saal
 Sares Regis Group
 of Northern California*
 Robert M. Savasky*
 Hannah Scher and Family*
 Silicon Valley Community Foundation
 Sinai Memorial Chapel*
 Beverly Buller-Tannen
 and Eugene Tannen*
 Marilyn R. Taubman*
 Ruthellen and Monte Toole*
 Marianne and Bernard Werth*
 Beverly Wolfe*
 Anonymous (1)

SILVER CIRCLE

Harry Abrahams*
 Liki and Joseph Abrams*
 Earl Annetston*
 Norman R. Ascherman, D.D.S.
 Patricia H. Axelrod*
 Marion Baer*
 Patricia and Stephen Barulich*
 Arthur S. Becker*
 Joyce and Joseph Behar*
 Joan C. Benjamin*
 Allan Berenstein*
 Doris Blum*
 Herbert Blumenthal*
 Jeremy Bower*
 Joan DeHovitz and Aaron Braun*
 Charlie and Herbert Brown*
 Brenda F. Buckner*



Anne Cahn*
 Galina and Alexander Capelson*
 Julian Davis Lectureship Fund
 of Mount Zion Health Fund
 Tana and Keith Davis*
 Christina Decker*
 Helen Diller Family Foundation
 of the JCEF*
 Edith and Benjamin Dorfman*
 Esther Dover
 DRA Advisors
 Diane and Bill Ehrlich*
 E.J. Weber Electric Company, Inc.*
 Paul Epp*
 Debra L. Estrin*
 Leslie A. Gordon and Craig R. Etlin
 Joyce Mishel and Stanley Ettinger*
 Everest Waterproofing
 & Restoration, Inc.
 Joan and Fredrick Falender*
 Helen and Steven Feinberg*
 Suzanne and Elliott Felson*
 Charles T. Fetterman
 Diane and George Frankenstein*
 Suzanne M. Stassevitch
 and James W. Friedman*
 Barbara and John Friedman*
 Dore and James Gabby*
 M. Damien Gall
 Emily and Dr. Gerald Gardner
 GlynnDevins Advertising & Marketing
 Lynn and Gary Goodman
 Robert L. Greenberg*
 Constance and Milton Greenfield*
 Gruber & Associates
 Leslie R. Guggenheim*
 Pierre M. Hahn*
 Midge and Sylvan Heumann*
 Honeywell International
 Honig Vineyard & Winery
 Ann and Michael Horenstein*
 Bobbie Horowitz
 Lois and Robert Jacob*
 Erno Kaldor*
 Lenke Kaldor*
 Linda and Thomas Kalinowski*
 Regina Karson
 Ruth and Arnold Kaufman
 Bonnie Levinson and Donald Kay*
 Esther and Morris A. Kohn*
 Anne Kosarin
 Kosher Mart Foods*
 Alice and Dennis Krieger*
 Stanley Krieger*
 Sondra and Ronald Lanstein*
 Esther and Ron LaPedis, M.D.
 Phillip E. Leboit
 Louise Bird and Jeffrey Leibovitz*
 Max A. Levin*
 Marlene and Fred Levinson*
 Barbara and Morton Levinson*
 Shirley and Raymond Levy
 Lexus Champions for Charity/Octagon
 Ellen Leznik
 Jeffrey Lilly
 Greta Livingston*
 Eva T. Lokey*
 Paul J. Lubitz*
 Melanie and Peter Maier*
 Helen Fredkin and Abraham Malaster*
 Joan and Roger Mann
 Victor L. Marcus*
 Gladys and Larry Marks*
 Carol and Melville Marx
 Gary I. Mazo
 Karen and Chris Mead*
 Marilyn and Charles Meier*
 Tasia R. Melvin*
 Donna and David Mendelsohn

Selma Mittelman*
 Arnold Mozar*
 Hilda Namm*
 Peter Neubauer*
 June K. Neuhaus*
 New Life Management
 & Development, Inc.
 Bela Newman*
 Maria Rabinovich
 Valerie and Theodore Reich
 Jason Roberts
 Anne and Martin Roher*
 Beverly Rosenberg
 Jack Rosenberg
 Janet and Zev Rubenstein*
 Sharon L. Litsky and John F. Sampson*
 Nancy Kwan and Alan B. Schwartz*
 Janice V. Selix*
 Joyce Kaplan and Jerome L. Shapiro*
 Judith and Leonard Shaw
 Barbara B. Shupin
 Marga Dusedau and David Sklar*
 Anne and Leonard Slater*
 Jacqueline and Lawrence Slayen*
 Barbara Hilp Smith*
 Henry Sohn*
 Jeffrey R. Spirn*



*"We've been very fortunate and we want to give back to the community," say **Barbara and Richard Rosenberg**. "The Jewish Home is one of our favorite philanthropies. Here you can observe the difference your help makes. There is a sense of immediacy and it's very satisfying."*

Joelle Steefel
 Sandra and Edward Stein
 Vera and Harold Stein*
 Maxine Chesney and Edward Stern*
 Marilyn and William Sugar*
 Roselyne C. Swig*
 Stephen Tigerman
 Jerome A. Tobias
 John A. Toker*
 Susan Romer and Donald L. Ungar*

United California Glass & Door*
 United Way of Silicon Valley
 Miriam H. Wain*
 Kathy Waldron
 Jayne and Isidore Warman*
 Stephanie and Elliott Warshauer*
 Liselotte N. Weber*
 Joanne and Edward Weiner
 Heidi Stewart and John Weinstein
 Lydia Selim-Wempe
 and James Wempe*
 Willis Insurance
 Beverly Rosenberg
 Joseph Yocca
 Julie and Adam Young
 Denise and Joseph Ziony*
 Alya and Max Zolotorev
 Jean and Richard Zukin*
 Anonymous (2)

HONOR CIRCLE

Ruth C. Abrahams
 Pamela and Scott Abramson
 Patricia and Ronald Adler*
 Julia Raydel and Alexander L. Alshoiev
 Elizabeth and Kenneth Atterman*
 The Kenneth S. Baron Family*
 Frances and Leonard Berger*
 Diane and Jeffrey Bernstein*
 Best Oriental Produce, Inc.
 Eva and Robert Bloch*
 Pola Burk and Bernard Blutman*
 Ann Fay and William S. Breall, M.D.
 Steven Burrows
 Karen and Steven Busch*
 Edith Bushell
 Charles Schwab Corporation
 Foundation
 Melody and Richard Chasen
 Marna Clark*
 Nancy L. and Morton R. Colvin
 Phyllis and David Cook*
 Joan Libman and Jim Coughlin
 Valerie and Paul Crane Dorfman
 Lillian S. Edwards
 Michel M. Elkaim
 Sandra and Edwin Epstein*
 Dianne Estrin*
 Alfred Ezekiel
 Jane and Glenn Fisher*
 Toby and Philip Flax
 Harriet Friedman*
 Jesse C. Friedman
 Walter Fuchs*
 Sharon Rosenbaum and Duane Gilbert
 G.L. Dito & Associates, LLC
 Devorah Goldberg
 Eileen and Gary Greenberg
 Susan and Robert Greenberg*
 Rochelle Alpert and Steven Greenwald
 Susan and Alan Greinetz
 Naomi R. Groeschel*
 Marsha and Ralph Guggenheim*
 Barbara and Gary Haber*
 Margaret L. Hardy*
 Dorothy Harkavy*
 Barry P. Helft
 Elaine A. Hilp*
 Florence and Samuel Hoch*
 Linda and Ron Israel
 Marilyn Jaffe*
 Renee and Dennis Jermaine
 Kendra and Thomas Kasten*
 Elizabeth and Brian Katcher*
 Eunice and Gerald Kenner
 Lillian and Sidney Kevich*
 Adam Kline*
 Krishna and Bert Kopell*

Sherie A. Koshover*
Howard Lader*
Wendy and Johnathan Lehman
Arlene and Paul Leiber*
Rose Lerman
Marion and Harry Lewenstein Fund*
Jennifer and Reid Liebhaber
Deborah Kaufman and Idrees Malik
Rabbis Janet and Sheldon Marder*
Vaso Medigovich
Sara and Richard Mesirov
Denise and Erik Migdail
Judith and Walter Miller*
Deborah Mitchell*
Morrison & Foerster Foundation
Judy and Jay Nadel
Jan and Robert Newman*
Harriet Norris*
Sandy and Barry Oberstein*
Christina and Bruce Orchid
Kent D. Owen*
Pacific Auxiliary Fire Alarm Company
Julius Quetnick*
Eva and Leon Rajninger*
Judy Watson and Paul Rasmussen
Gibran and Lloyd Rath
Lila and Neville Rich*
Irene Riemann
Nancy and Richard Robbins*
Jane and Phillip Rollins
Pam V. Rolph*
Jack Rosenbaum
Martha and Milton Rosenberg*
Lawrence A. Samuelson
Lorin and Barry Schneider
Henrietta Schwartz*
Reva and John Segall*
Alane and Jeffrey Seife*
Seiler Philanthropic Fund of the JCEF
– Ruth and Donald Seiler*
Suzanne and Theodore Seton
Jo and Henry Shain
Madeline and Steven Shakin*
Sari and Franklin Shifrin*
Shoreline Center, Ltd.*
Alberta and Nathan B. Siegel*
Laurie H. Sizemore
Vivian R. Solomon*
Ruth S. Steiner
Lore and Henry Tenckhoff
Jane and Allan Unger
United Way of the Bay Area*
United Way of Orange County
Tamara and Andrei Vassiliev
Barbara and Robert Voss*
Nina Weil*
Barbara and Matthew Weinberg*
William K. Weinstein
Clark Weisman*
Bernadette and James Weslow
Norbert S. Wesolow
Joan L. Zentner*
Anonymous (4)

MITZVAH CIRCLE

Sy Aal*
Caroline and John Abele
Janet and Mark Abelson
ACCO Engineered Systems
Judith L. Ackerman
Doi and Thomas Adams*
Vida and Gordon Adelman*
Sharon R. Adelson
Betty and Jacques Adler*
Julius Aires
Marcia and James Allegretti
Ruth J. Allen*
Leigh H. Allison

Theresa A. Allison
Soryl R. Angel
Rochelle and Harrison Anixter*
Lucy Olivari and Leonard D. Anspach*
Judy and Robert Aptekar
James Armistead
Susan Aronovsky
Elissa and Daniel Arons*
Mary Ann and Samuel Aronson
AT&T Employee Giving Campaign*
Linda and Gary Attell
Frances Aubert
Israel Babchin
Olga Kashlinskaya
and Yevgeniy Babichev*
Albina and Ilya Balanov
Stella Balbi*
Boris Balter
Robert Barnett
Matilda Barshap
Jeri and Bruce Bartfeld*
Shamai Brown and Bill Bassett
Warren R. Bauer
Roslyn T. Beauchamp*
Dorothy and Joseph Becker*
Robert Beer
Randi and Robert Belot*
Inna and Vadim Belyaev
Pearl and Michael Bender
Edward Ben-Eliezer
Joelle and Russell Benioff*
Vivian and Bernard Benn
Sally L. Berger
Myron Berkman
Jane and Douglas Berl
Aline and Warren Berl
Gail and William Berland
June F. Berliner
Anita C. Berman*
Arlene and Philip Bernstein
Cassandra and William Bernstein
Alexandra and Yuriy Beygman*
Jane Kahn and Michael W. Bien
Rose and Gary Bigus*
Louise Billotte
Robert Binder
Evelyn and Ralph Black*
Larisa and Izrail Blank
Sandra H. Bley
Selma and Karl Blick*
Lore H. Block*
Ellise and Hendrik Blom*
Gayle and Michael Blum*
Barbara and Moses Blum
Catherine and Bernard Blumberg*
Isabel and Peter Blumberg
Valerie and Max Blumenfeld*
Sylvia D. Blumenfeld*
Madalyn and Frank Blumenthal*
Maureen and Joseph Blumenthal*
Marina and Leonard Bokman
Alla Bondarenko
Nancy and Michael Borah
Irina Borshchevskaya*
Charles Boucher
Yevgeniya and Nikolay Boyko*
Inna and Ruvim Braude
Margot E. Braun*
Mimi and Roman Braunfeld*
Ruth Braunstein
Tatyana and Mikhail Brodsky
Dmitriy Bronin
Janet and Micah Broude*
Amy Brown
Diane and Mickey Brown
Phyllis S. Brown*
Ann and Raymond Brown
Renee and Mo Budak*
Vicki and Wayne Buder*

Iris Bulasky*
Carol and Frank Buonagurio*
Leo Burd*
Marla and Mark Cahn*
C. Roy Calder*
California Parking Company
Louise Cantrell-Kehoe
Deena Zacharin and Ralph Carney
Nanci and Merten Carpe*



Fern and William Lowenberg are dedicated to the Jewish Home. "We have a deep respect for what the Home does for the Jewish community, and we believe in the Fifth Commandment – to honor thy father and thy mother."

Bernard Carr
Jeanette and Martin Carr
Stella Gaber and Alex Chupkin
Karen and Micah Citrin*
Gale Mondry and Bruce Cohen
Carole A. Cohen
Roberta and Leonard Cohn*
Rafaella Cohn
Mona and Saul Cohn
Roxanne and Stan Cohn*
Eunice Coleman
Ruth Coleman
Edna and Edwin Colloff*
Marion R. Colton
Thelma and Kenneth Colvin*
Congregation Beth Am
Loretta and Mark Congress
Donna M. Cooper*
Barbara and John Cooper
Sandra and Alfred Coppin
Valerie and Scott Corvin
Susan and John Cronin
Sandra and Brian Cruz
Joan and Mike D'Amico
Philip E. Damner Jr.*
Marcia Danab
Milton S. Danoff*
Helaine and Richard Darling*
Amy Wolfe-Darling and Scott Darling*
Gwen Davis*
Cara Letofsky and James Davnie*

Myrna and Donald DeFries*
Jobyna and John Dellar
Sharon and Alex Delly
Rita and Robert DeLue
Beverley and Bruce Denebeim*
Sandy and Roger Deromedi
Janice Diamond
Maxine S. Dickson
David L. Diller*
Paul M. Diller*
Irina and Alexander Dondysh
Sandra and Conrad Donner*
Suzanne and George Dorrance
Maryann Dresner
Sylvia and Jerome Drexler*
Julie Friend and Philip Dreyfus
Joanne and Donald Druyanoff*
Helen and Jeffrey DuBowny*
Tanya and Alec Dukhovny*
Martin Dvorin*
Nathan Dwiri
Shannon and Grant Edystone*
Elyssa B. Edwards*
Ruth and Sylvan Eisenberg*
Maria Eisman
Ruth and Harold Epstein*
Jean and Herbert Epstein
Ruth Fishman Epstein
Susan Euphrat
Dana and Berry Evans
Lenci Farkas*
Mary Farrelly
Stephanie and Steven Farsht*
Norma and Harold Feinberg
Adella and Jonathan Feinberg
Olga and Alex Feldman*
Lynne F. Feldsher*
Judith and Fred Fiedler*
Sofiya Figlina and Mikhail Figlin*
Anita and Stanley Finkel
Lynne and Fred Firestone*
Susan and Allen Fischer
Ann Swidler and Claude Fischer
Doris Flamm*
Lisa Gurwitch and Martin Fleisher
Martin Fleishman*
Ana C. Florez*
Deirdre Fogarty-Harris
Caren and Les Fondy
Leatrice and John Ford
Janice and Scott Foust
Muriel and Clyde Fox*
Cathy and Frederick Fox*
Ellie and Albert Fraenkel
Lilli and Max Frank*
Eva Angress and Walter Frank*
Franklin Templeton Investments
Donna and Michael Franzblau
Alexander Frasco
Sarah and Robert Freedman
Freeland Cooper & Foreman, LLP
Janet and Sigmund Freeman*
Eva and Stephen Freeman*
Fredric S. Freund
Lois Fried*
Mimi and Moshe Fried
Laurie R. Friedman
Cynthia Krieger and Stuart Friedman*
Virginia H. Friedman
Alberta and Roy Fross*
Bernice Frucht
Marlene and David Fuller*
Vicki Osborn-Gagen and Danny Gagen
Sylvia and Harold Garfield
Richard Gatti
Valentina Gelfer
Vlada Gelfond*
Esther and William Gellen
Barbara Gelleri*



Amy Gerstein
Rosalie and Harold Gevertz*
Anna and Walter Gewing*
Marion and Irwin Gibbs*
Ann and John Gigounas*
Arthur N. Gilbert*
Elaine and Barry Gilbert*
Louise A. Stirpe-Gill and James Gill*
Marsha and Stanton Glantz*
Diane and Bob Glas
Marcia and David Glassel*
Gay O. Glikman*
Susan and Gene Gluzman
Faina and Simon Goberstein
Yvonne and Gary Goddard
Genrikh Gofman
Eva Gold
Sandra and Henry Gold*
Phyllis and Bernard Goldberg*
Jane B. Goldberg*
Milton Goldberg*
Gerda and Roger Goldberg*
Sarah Goldberg
Sandee Blechman
and Steven H. Goldberg
Marina Goldenberg
Judy H. Golding*
Tatyana and Naum Goldman
Corinne and Walter Goldman*
Estelle and Bernie Goldstein
Amy Sukhov and Charles Goldstein
Jerome Goldstein*
Marilyn Frank and Martin H. Goldstein
Sandra and Robert Goldstein
Arlene S. Goldstine
Linna and Alex Golodriga
Daniel H. Goodman
Fay and Mervyn Goodman*
Enid and Ronald Goodman*
Ruby Goodman*
Elaine and Kieve Goodstein*
Galina and Ilya Gorodetsky*
Brenda and Hugh Gottfried*
Alex Gove
Eletta Graceffa*
Sally and Gilbert Gradinger*
Sally and Ron Grassi
Mignon S. Gravitch*
Diane Green*
Karen R. Green*
Donna and Michael Greenberg
Nancy Greenberg
Marshall A. Greene, M.D.*
Lorrie and Richard Greene
Maudellen N. Greenhood*
Mimi and Leonard Greenwold*
Gail S. Grossman*
Frances and Michael Grossman
Relda Grossman
Sandra and Philip Grubstick
Lottie and Morris Gutterman*
Margo and Allen Haas
Henry O. Haertel*
Cherie and Frederick Half
Samuel Halperin*
Francine Hament
Arden and Larry Hamilton*
Stephen Harlan
Todd Harlan
Caryn and Ian Harris
Anna and Andre Hassid*
Michele and Rudy Hassid*
Marcia and William Hastings*
Debbi Schwartz and Rose Hauer
Helen and Arthur Hausman
Werner Hebenstreit
Shelley Hebert
Alfred E. Heller*
Mary and Douglas Heller*

Karen Heller
Susan and William Heller
Mina Hendricks*
Berthold Herpe
Sara Czaja and James M. Herron
Eve and Vernon Heyman*
Carol B. Hicks*
Harriet Koppman and Frank Hochfeld*
Sheila Hochman*
Hannah Hochstaedter
Linda and Robert Hoffman
Stephanie and Rudy Hoffman*
Susan and Anthony Holbrook
Sondra and Stanley Holwitz
Catherine and Louis Honig*
Arlene and Jonathan Horowitz*
Willard D. Horwich
Valerie Howard
David Howey
Yvonne and Leonard Hurwitz*
Charlotte and Jerome Hyman
Paul V. Ideker*
Trude K. Ingram*
Roz and Steve Itelson
Allan B. Jacobs*
Ronit and Dan Jacobs
Marilyn and Gerson Jacobs
Ellen Fuerst and Michael Jacobs

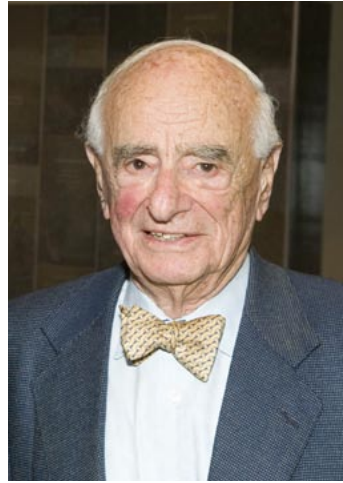


Alan and LaVerne Silverman may no longer have their own parents, but through their commitment to the Jewish Home, "We honor our parents' memories by helping to support other people's parents."

Sylvia F. Jacobs
Helen and Donald Jaffe
Valerie and Thierry Jahan*
Rosalind and Donald Jarvis*
Sylvia and Louis Jennis*
Priscilla and Gerardo Joffe*
Johnson & Johnson
Family of Companies
– Matching Gifts Program*
Anne and David Johnson
Marilyn Kallins and Timothy Johnson
Adrienne H. Jonas*
Martha Jonas*
Emma Kahn*
Sylvia Kahn
Kaiser Foundation Health

Ellyn Hament and Jeffrey Kamil
Stephanie L. Kane
Yudolf Kantor*
Wilfred Kapkin*
Dave Kaplan
Adela and Joel Karliner
Audrey S. Karnal
Regina and Jeff Karp
Dora and Khary Kats*
Beverly S. Katz
Bernard Katzmann*
Susan R. Katz-Snyder*
Susan and Gene Kaufman*
Olga and Isai Kaufman*
Yelena and Vladimir Kazantseva
Jacque and Martin Kelinson
Dana and Maury Kelisky
Andrea Keller*
Karen Kelly
Gwendolyn and John Kerner, M.D.
Sandra and Jacques Kerrest
Alina Kerson*
Elena Kesil
Deborah and Robert Kessler
Emiliya Kil
Vicki and Paul Klapper*
Elisa and Jack Klein
Cathlin H. Milligan
and Gregg S. Kleiner*
Emil Knopf*
Ruth and Heinz Kochman*
Jacob Koff*
Galina and Valery Kofman
Ernest Kohn*
Vivian and Sidney S. Konigsberg*
Frida Koppl
Gabriele and Albert Korn
Janet L. Kornblum
Galina and Gene Korsunsky*
Sara Koshover*
Zhanna Shpits
and Vladimir Kotlyarenko*
Abby Kovalsky*
Peggy and Jim Kraft
Arthur J. Krakower
Mark Kramer
Stephanie and Morris Krantz*
Marilyn Krassner*
Donald P. Krauss
Rosalia Veksler
and Eugene Krayzbukh
Beatrice and Henry Krivetsky*
Natasha Krivoshchapova
Heather Kroupa*
Wendy Krowne
Anna Seletsky and Vladimir Krutenev
Alyson Rae Kuhn*
Liliya and Samuil Kur*
Caryl and Kenneth Kurtzman
Sarah and Daniel Kushner
Galina and Sam Kvitko*
Olga and Gregory Labunskiy
Sylvia F. Ladar Trust*
Sabina Lambert*
Yelena and Boris Landa
Suzanne Landson*
Marvin Langsam
Joan LaPedis*
Mary E. Larkin
Marina and Sergey Lazarevsky*
Sherry and Thomas Lazore
Thea and Samuel Leavitt*
Mollie LeBoit
Sheila and George Lederer*
Alexandra and Wolfgang Lederer*
Jenny and Thomas Lee*
Alice and Jack Leibman*
Eva-Lynne and Owen Leibman
Lisa Metzger and Steve Leibovitz*

Lorraine and Clyde Leland
Muriel Leland*
Dorothy and Melvin Lemberger
Golden and Edward Lerman*
Brian Z. Letofsky
Julie C. Letofsky
Larry M. Letofsky*
Regina and Boris Letuchy*
Ralph Levin*
Sharon and Jerry Levine*
Sheppard M. Levine*
Naomi and Carl Levinson*
Eva and Michael Levinson*
Wendy and Ivan Levinson*
Bonnie and Daniel Levitt
Shira and Al Levy*
Maria and Allan Levy
Phyllis and Harold Levy*
Mrs. Jacob Levy
JoAnne and Jesse Levy*
Marian M. Levy
Peter L. Levy
Roland Levy
Gene and Harry Lewin*
Libby and Werner Lewin*
Phyllis Pottish
and Adam A. Lewis*
Frederica L. Lewis*
Hildegard Lewis*
Roman Libov and George Libov
Greta Liebman*
Carol Eisenberg
and Raymond Linkerman*
Judith Lipsett
Shiela R. Lipstein*
Helene Lipton
Dr. and Mrs. Marvin H. Lipton*
Littler Mendelson Foundation, Inc.*
Joane Litvak*
Elena Lobatsevich
Ilse Loewe*
Marcus Loorya*
Ruth and Jenő Lorincz
Helen Luey
Judith and Mark Lurie*
Connie and Robert Lurie
Caryn and William Lyons
Tamara Lyubimova
Brenda and Donald MacLean
Adelaide and Albert Macovski*
Louise Magnier*
Terry Magnin*
George H. Maisels*
Marion and Morton Malkofsky*
Rosario and Sydney Malkoo*
Mr. and Mrs. Richard D. Maltzman
Gregory S. Mand*
Eileen and Mike Marchasin*
Leila and Alan Marcus*
Diane and Hubert Marcus*
Katherine and Robert Margolin
Peggy and Ron Marinoff*
Melanie R. Marks*
Irina and Valery Martynov*
Vadim Matikhin
Liliya and Vladimir Matt*
Dorthea A. Mayer
Gerald Mazin
Marcia Meister*
Carolyn and Joe Meiswinkel
Joan C. Mendoza
Socorro J. Mendoza
Diane and Jeremy Merrill*
Trude and Hermann Meyer
Lucia Michaud
Roberta and Spencer Michels
Eleanor and Howard Miller*
Jennifer Miller
Ann Millhauser*



Respect and appreciation for the dignity and potential of each individual has been the hallmark of Victor L. Marcus' service, support, and guidance to the larger community and to the Jewish Home in particular since 1967.

Debby and Laurence Mindel
Inna and Morrie Mink, M.D.*
Alla and Alex Miretsky
Robert Mittman
Sue and John Molinari
Sandra and David Monasch III
and Family*
Claire S. Moon
Sylvia and Horace Morden
Susan and Peter Morenstein*
Cindy and Craig Morris*
Susan and Mark Morris*
Marius A. Moscovici
Josephine Mosk*
Pearl and Mel Mosk*
Ellen and Michael Mundell
Catherine H. Munson
Maxwell A. Myers*
Alla Makievsky
and Michael Myslovaty*
Nancy and Peter Nagler
Anita and Marvin Nathan
Philanthropic Fund of the JCEF*
Mavis Nathan*
Sora Lei and Donald Newman
Dana Martin-Newman
and John Newman*
Maxine and Melvin Newman*
Constance and Samuel Newman*
Galina and Henry Nigulas
Carol and Jacob Nogi
Zel Bauer and Leonard Norack*
Nancy Northrup
Gayle and Allen Notowitz*
Suzie K. Oh
Brenda Oliver
Eileen I. Oliver*
Anita and Ingram Olkin*
Susan and Richard Olshen*
Carolyn and Karl Olson
Ruth and Jerry Opper*
Shari and Donald Ornstein

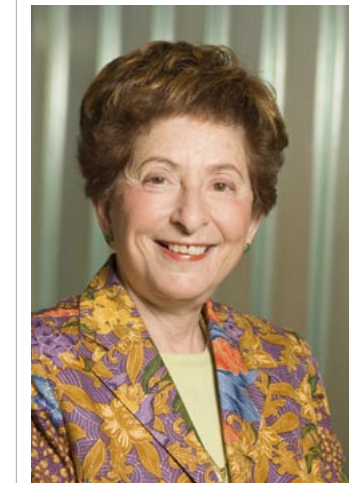
Gerald A. Ornstein*
Barney Orovitz
Alyssa and Erickson Osian*
Myrna and Archie Ossine
Yelena Ostromogilskaya
Joseph M. Ostrow*
Jocelyn Owen
Judy and Gary Pasquini*
Patience and Adventure Musicworks
Jody E. Patraka*
Elizabeth and Stuart Patt
Helen L. Pearl
Judith and Gerald Pelzner*
Lawrence E. Pelzner*
Brigita and William Perazich
Joan and Allen Perris
Lilian and Ilya Perry*
PG& E Corporation
Employee Deduction Program*
Susan and David Philips
Sandra and Lloyd Plafker*
Gerry R. Podolsky*
Pollack Family*
Yefim Polsky*
Alexandra Braude
and Michael Ponedelnikov
Laurie B. Spoon-Potter
and Kevin T. Potter
Daragh and Neal Powers
Nancy and Norman Price
Richard Puccinelli*
Lynn and Rab Puri
Janet and Brian Quint
Mary and David Rabb*
Davida and Michael Rabbino*
Isaak Rabinovich
Judith Raiskin
Marsha Rivkind Raleigh
Alan Raznick
Lyudmila and Roman Rechevsky*
Cindy Gilman Redburn
Ethel G. Regan*
Adele and Stanley Reich*
Jan C. Reicher
Rob Reicher
Lois and Julian Rhine*
Karen and Robert Rhodes
The Rich Family
Linda Richardson
Rob Richardson
Joyce and Gary Rifkind
Richard Risbrough
Alison and John Roberts
Karen S. Robson*
Susan and Saul Rockman*
Elena and Alexander Rodstein
Lise Rogers
Sophia and Anatoly Romanovsky*
Rochelle and Jeff Rondinone*
Bettye and Jacques Roos*
Ilse and Herbert Rosenbaum*
Ruth H. Rosenbaum*
Susan and Edwin Rosenberg*
Ellen and Martin Rosenberg
Gerald B. Rosenstein*
Betty Rosenthal
Eva Yarmo and David Rosenthal*
Dorothy Rosenthal
Joan and Kenneth Rosenthal*
Lisa and Mark Rosenthal*
Violet and Bernard Ross
Sheila Ross
Wanda P. Ross*
Joel N. Rossen*
Lois and Arthur Roth*
Janet and Peter Roth
Rose-Emily and Leslie Rothenberg
Frances S. Rothman*
Ann M. Rovere

Esther Rubin
Marina Rubin
Victor Rubstein
Fred Rudow*
Renee Rushnawitz
Sarah L. Sadler
Samuel Safyan
Janet L. Saks
Natalia Samoilova
and Arkadii Samoilov
Louise A. Sampson*
Gertrude H. Samuel*
Alfred V. Sanguinetti*
Margaret and Melvin Scheinman
Sandra and Albert Schlesinger*
Renee and Howard Schlesinger*
Stanley Schlossman
Vicki and Jack Schneider
Claire and David Schoenfeld*
Annette and Harry Schriebman*
Albert Schultz*
Deborah Schwartz
Sylvia M. Schwartz*
Linda and Alan Schwarz
Paula and John Schwerin*
Barbara Scodel*
Ivan H. Scope
Ranee and Joseph Seiger
Susan and Richard Seiler
Gaye and Stuart Seiler*
Sol Selim
Sylvia Selim*
Rita and Elizabeth Semel*
Mark A. Senick
Serafima Serebrennikov*
Mary-Ann and Richard Shafer
Mary Shapiro*
Florence Shaw
Lois Shenker
Carole Sherick
Svetlana and Mikhail Sheykhet
Marianne and Herman Shine*
Raisa and Alex Shkurovich
Eugenia Shlyakhov*
Klara and Kim Shlyapochnik*
Marina and Danil Shnaydman*
Shira and William Shore*
Mrs. Stephen Shulman
Lia and Arkady Shusterman*
Fred Silberman*
Linda Silverman
Samuel Silverman*
Barbara and Shel Silverman*
Simon Silverman
Joanie Silverstein*
Lois and Irving Siminoff
Marlene Siminow*
Joan and Jack Simon
Rimma and Michael Sklyar
Marilee Morris and David Skolnick*
Rolly L. Slatt*
Evelyn and Richard Slusky
Gertrud and Henry Small*
Audrey and Bob Sockolov*
Zhanna Sokolovskaya
Valery D. Sokolovskii*
Allan E. Sommer*
Songwriting Works
Dianne and John Sonksen
Eldon and Joseph Sozzi
Roy Sozzi
Ruth and Jonathan Sperber
Robert J. Silverstein
and Stephen M. Sperber*
Michael I. Spiegel
Bonnie and Louis Spiesberger*
Brian H. Spigelman*
Doris and Bill Spitzig*
Rose and David Stadtner*



Beverly and Roman Starno
Anne M. Stein*
Judith A. Stein
Shelley and Matthew Stein
Anita Steinacher*
June E. Rubin and David Stern
Irene and Jeff Sternin
Kereen and Richard Stoll
Amy Stone
Dolores Stone*
Elise and Don Stone
Carole and Jay Stone*
Nelson Stone
Marianne Strassman*
Anne and Sherman Strauss*
Joan Barnes Strauss
and Steve Strauss*
Lori Streim
Sherri and Charles Sugarman
Raisa R. Sullivan*
Edith and Leon Svirsky
Leah Swiler
Rochelle and Sander Taboh
Karolina and Sheldon Tager
Phyllis R. Tannin
Marilyn Tapson
Carolyn Sudberry
and Deborah Teitsman
Sam H. Thal*
Titchell, Maltzman, Mark & Ohleyer
Richard W. Toker*
Betty A. Toole
Lawrence Tubelle*
Turner Construction Company*
Dorothy Unger*
United Airlines
Employee Giving Campaign*
United States District Court
for the No. District of CA
Maria Ury*
Alla and Igor Ushomirsky*
Aimee A. Wahed and Roger Vaede*
Eva S. Vare
Priyanka and Tony Varni*
Gertrude G. Vederoff*
Ruth J. Veprin
Alla Kaper and Filip Vinengauz*
Eugene Vodkin
Yelena and Vladimir Volchenok
Sally and Eugene Dennis Vrana*
Jerrie Wacholder*
Dorothy and Paul Wachter*
Jessica and Andrew Waggoner
Rose Warshaw*
Therese and Joseph Weber*
Lewis Weil*
Roschelle and William Weiman
Erlinda Weinberger
Ernest Weinberger
Lora F. Weiner*
Elissa Finney and Steven Weisberg*
Barbara and Paul Weiss
Randy Weiss*
Lotte and Sidney Weiss*
Jan Herr and Elihu Welber
Eleanor Wellman
Carolyn and Stanley Wiener
Ronald Wilk
Barbara and Chris Wilson
Marcia Epstein and Donald Wilson*
Wilson, Meany & Sullivan
Nina and Charles Winthrop*
Jean and Donald Winton
Marya K. and Bruce Wintroub
Michael Wise
Wolfe Philanthropic Fund
- Susan and Robert Wolfe
Penny L. Wolfsohn*

Glenda and Arthur Wolpert
Victoria and Vadim Yampolsky*
Harold Yanow*
Geraldine J. Yorkis
Ruth and John Youngquist
Marilyn Zack*
Sylvia and Arthur Zanello
Bobbie and Larry Zemansky*
Alice Ziegler*
Debby and Michael Ziegler
Dr. and Mrs. Bennett G. Zier*
Norma and Harold Zimmerman*
Lydia and David Zinn
Seymour Zoger*
Lore A. Zutraun*
Lyudmila Zverhovskiy*
Anonymous (11)



"Giving tzedakah and giving of myself - volunteering - was part of my upbringing," says Susie Julius, who has been staffing the cash register and schmoozing with residents in the Home's garden café since 2000. "I'm grateful that I'm in the position to do it."

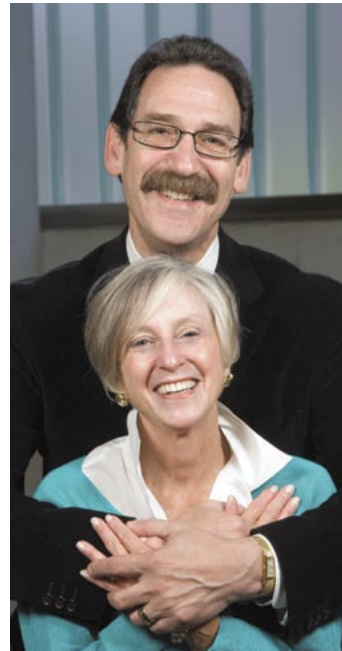
CHAI CIRCLE

Marilyn R. Abbott*
Joan W. Abraham
Helen and Paul Abraham
Bernyce and Gerald Abramovitz
Laurie and Joseph Ackerman
Helen M. Adler*
Maureen E. Adler*
Dianne and Michael Adler*
Marcia Aitken
Rachel Alhadeff
Irving Alter
Jacqueline Annes*
Ann's Produce Company
Lee M. Appel*
Cheryl and Robert Arenson*
Edith K. Arrick*
Jakob A. Atlas*
Roma M. Auerback*
Barbara and Gerald August*

Yetta Bach*
Margie Siegan and Ronald Bachman*
Wanda and Peter Baczek
Bobbi Bader
Tatyana and Alexander Bagerman*
Alane L. Baker
Judy and Ramon Balagot*
Sharon and Dave Baldwin
Dale Rabinov and Bert Banks
Zita Bar*
Lynda and Andre Barnetche
Annette Barnett
Sharon Barnett
Roslynd and Robert Bauer*
Wendy Bear*
Sarah and Leonard Beck*
Ilene B. Becker-Forman
Jane and Hugo Beckerman
Patricia and Ernest Belden*
Alfred O. Belotz
Hagar Ben-Eliezer
Norma Jean and Alfred Bercovich*
Lyubov Serebryanaya
and Vladimir Berdichevskiy
Rita Berenson
Sherry and Burton Berenstein*
Helle and David Berger
Kenneth Bergman*
Bella Berkovitch*
Janice and Dennis Berkowitz*
Amy Wollman and Gerry Berkowitz
Linda and Peter Bernstein
Joan and Burton Berry*
Janet and Nilo Bertoloni
Galina Yushina and Valeriy Biberгал
Winnie and George Biocini*
Sofiya and Yakov Birger
Anna and Sam Blank*
Judith Blankman
Faye E. Blatt
Lenore and Charles Bleadon
Sheila Audrey Blecher
Steve M. Blick
Roz and David Bloom
Jayne S. Bloom*
Elton J. Blum
Regina and Moshe Blum
Margaret and Thomas Blumberg
Ann and Julius Blumenthal
Herb Blumstein
Adrienne and Ernest Boden
Jerry Weinberg and Peter Bodge
Aleks Bondar
Nina Bonos
Dvora Parker and Neil Boorstyn
Anna and Andrey Borovik
Lina Borovsky
Leslie and Daniel Borsuk
Karen and Steven Bovarnick*
Pati and Daniel Boyd
Janet Braff
Martin Bramante
Joanne Braunstein*
Arthur M. Bree*
Mirka and Michael Breen
Max Bresler
Laila Bridgman
Lisa and William Brinner
Judy and Ben Brockmeyer
Jean and Mark Brodie
David Brody*
Nancy Brody
Zina and Jacob Bronstein
Jeanette E. Bronstein*
Marilyn and Henry Brook
Ann Z. Brown
Ruth M. Brown
Louise and Kenneth Brownell
Roman Bruk*

Elana Buch
Lottie and Henry Burger
Ann and Herman Burger*
Vicki and Barry Burstein
Susan Cable
Selma and Arthur Cader
Felissa and Myron Cagan
John Camp*
Barbara Canellos
Edgar A. Cantor*
Judith Capellino
Shelly and William Caplan
Sheryl and Ivor Caro
Joan and Joel Carr
Joyce and Ari Cartun*
Ginette Cary
Helene H. Catz*
Lorraine Centore
Alberta and Paul Chase
Helen and Donald Cherry
ChevronTexaco*
Emma and Grigory Chupkin
Leona and Stanley Cleaner
Ben Clewans
Suzanne and Howard Coan
Cindy Codding
Hanna and Leo Cohan*
Eleanor C. Cohen
Elodie Cohen
Jean Cohen*
Rose and Melvin Cohen*
Janice and Morton Cohen*
Suzanne Ducat and Stanley Cohen*
Gertrude Cohen
and Sandra Cohen-Wynn
Velma and Howard Cohn
Mildred Cohn*
Carol and Daniel Coles
Community Health Charities
of California
Beverly and Paul Contorer
Harold A. Cooper*
Ana Crane
Bella Dagovich
Ronni and Stuart Dake
Vergilia and Henry Dakin
Joseph U. Damico
Jean Dana
Shirley L. Daniel*
Audrey Dansereau
Suzanne N. Darwish
Rita Davidson-Kennen
and Murray Davidson
Victoria J. De Goff*
Ruth and Carlos de Mola
Ruth and Bernard DeHovitz
Verna C. Deromedi
Rozalia Dess
Edith Deutsch*
Elaine Diamond
Linda Diller
Renee and Harvey Dobkin
Yevdokiya Dobrusina
Sharon Dolev
Rose Drayer
Max Drimmer*
Jane and James Dubuque
Laura and Rudolf Duering*
Lidiya and Lev Dumer
Elissa A. Dunlop
Eliote Durham
Betty and Melvin Dvorson
Barbara and James Easton*
Judith Edwards
Elaine Ehrman
Sally and Stewart Eisenberg
Sharron and Elias Emergui
Evelyn and Lionel Engelman
Lois and Charles Epstein

Irene K. Epstein*
Nancy Epstein*
Dora Erdberg
Barbara C. Erickson*
Lolita C. Erlanger*
Gershon Evan
Fanya M. Eveleva*
Paul Fagen
Donna and Phillip Feitelberg
Audrey Fellows
Renee and Roger Fendrich
Wendie and Stanley Fetterman
Marlene and Jerry Fiman*
Trude and Don Fineman*
Vonda and Warren Fineman
Rebekah L. Finer
Sara G. Fingerman*
Ruth and Harry Fink*
Diane and Solon Finkelstein
Abrea and Lloyd Firestone
Zena and Leon Fish*
Charlotte and Paul Fish
Carol Fisher
Phyllis and Leon Fisher
Alla and Boris Fishkin
Nesya P. Fishstrom
Eleanor Fishtrom
Phyllis and Stephen Fletcher*
Tania and Michael Flom
Mariana and Semen Flyash
Joan and Michael Fox
Mark Frankel
Ruth Franken
Sylvia and Alan Freedman
Willi Rudowsky and Hal Freedman*
Evelyn and Howard Freedman
Dini Freeman
Heidi and Harry Freitas
Isaak Freylikhman
Sylvia Friedland*
Joyce Friedman*
Sylvia Friedman
Bessie Gabow*
Anna and Joseph Galanter*
John A. Galen*
Darlene and Bill Gall-Austin
The Galperin Family*
Lucy Gambarina*
Sarra Ganelina and Aleksandr Ganelin
Hereen Claudio-Garcia
and Pete Garcia*
Marilyn and Bert Gelder
E.M. Gershater
Vadim Gertsvolf
Arlene M. Getz
Kathee and Ron Giannini
Jonah Gitlitz
Loretta Giuliotti
Jane Gladshiteyn
Annie and Charles Glass*
Rochelle and Gary Glassel
Andria Glassman
Yuriy Glukhoy
Frida and Leonid Gluzman
Elisheva and Arnold Gold
Emily Gold
Frederica and Frank Gold*
Sandy and Marvin Gold
Gloria Goldberg
Marilyn T. Goldberg
Ann and Roy Goldberg
Marian and David Goldeen*
Gilda and Irving Golden*
Rose L. Goldkind*
Adele and Samuel Goldman
Maureen and Marc Goldrath
Mary and Paul Goldrath
Michael Goldshteyn
Bea and Ben Goodman



Fourth-generation guardians of the philanthropic traditions of the Shenson family, Fred M. Levin and Nancy Livingston continue the legacy by sponsoring weekly music concerts at the Jewish Home, as well as the Shenson Concert Series.

Brenda Goodman
Faina Kantor and Sergey Gorbunov*
Deborah and Ronald Gordon*
Larisa and Arkady Gorsky
Shirley and Robert Gottesman
Karen Duffy and Harvey L. Gould
Ida and Leonid Grach
Hanne L. Grafenberg*
Pauline Gralnick*
Arlene M. Getz
Kathee and Ron Giannini
Phyllis and David Green
Frances and Aaron Greenberg
James T. Clavin
and Burton M. Greenberg*
Rita and Harold Greenberg
Barbara and John Greenberg
Adam M. Greenwald
Lloyd A. Groeschel
Alice Grossman
Lyudmila and Moisey Gruzman
Zinaida and Anatoliy Gulimovskiy*
Sonja S. Gumpert*
Hyman Gurman*
Suzette G. Guth*
Mildred I. Haas*
Barbara Haber
Luba Haertel
Lloyd D. Hanford
Margaret and John Hansen
Linda Harrington
Adele R. Harris*
Antoinette Harris*
Clive D. Harris

Jack Harris
Margaret and Lawrence Hauben
Jerilynn Heiligman*
Shirley and Donald Heiman*
Gayle and Josef Helwani
Melissa Hennessey
Abraham Henselyn*
Sandra and Irwin Herlihy
Leonard Herzstein*
Agnes Heyman*
Anita R. Heyman*
Marjorie Hilsenrad
Mary Maron Hines
Jacqueline L. Hogan
Sharon Hogan
Shirley Hollenberg
Edith and Bernard Holtz
Ruth and Julius Honig*
Margo Horn
Rochelle Iczkovitz
Raya Ionis*
Leslie and Stephen Isaacs
Roean Iscoff*
Laura Dansky and David Isenman
Beverly and Jake Jacobs
Paul Jacobs
Valerie Jacobs
Joanne and Jeff Jagoda
Lois Goldstein Jamart
Myra R. Jaynes
Jewish Community Center
of San Francisco
Joanne Jonas
Andrea Julian
Lev Kabanovsky*
Pam Grossman and David Kahn
Robert A. Kahn
Vicki and Scott Kahn
Barbara Kalmoutis*
Joel Kamisher*
Margret Kanner*
Rima Kantorov*
Mary and Anatoly Kaplan*
Joseph Kaplan
Margaret Y. Kaplan*
Rita and Paul Kaplan*
Jerrilyn and Robert Kaplan
Nelli Karabet
Grigory Karanovich*
Feliks S. Karchemskiy
Carol A. Kare
Susan Kare
Sally Ann Karmelenski*
Marjorie and David Karp
Rosie and Joseph Karp
Robin and Sam Karp
Susan Kahn and David H. Kaskowitz*
Sara J. Liss-Katz and Jeremy W. Katz
Susie and Mark Katzman
Annette Kaufman*
Bernard Kaufman Jr.*
June and Jeffrey Kaufman*
Sharon and Seth Kaufman
Pauline Berkow and Ron Kauffman
Valentina and Yuriy Kaushanskiy
John L. Kay
Suzanne and John Kaye
Toby and Ron Kaye*
Millicent M. Kemp
Lynn Kendall
Evelyn and Irving Kernfeld*
Rachel and Michael Kesselman*
Anita and Victor Keyak*
Dimitry Khmelnitsky
Law Offices of Steven M. Kleiman
Frances and Fred Klein
Judy and Dan Kleinman
Hilda W. Kline*
Mikhail Kliorin*



Olga and Yuri Knauer
Robert L. Knox*
Marat Kogan
Reyzya B. Kogan
Susan and Stephen Kohn
Klara Kolker
Rosalie and Eugene Koppich
Estelle Korengold*
Alexander Korsunsky
Izabella Vurgaft
and Mikhail Korsunsky
Donna and Paul Kosarin
Ellen and Frederick Kotkin
Zinaida and Valeriy Kovalevsky
Bonnie Kowalsky
Perla and Ivan Kranich
Zhanna and Anatoliy Krasilovskaya
June and Charles Krieger
Betty Kroll
June S. Kronberg*
Roza Krupetskaya*
Sybil and Emanuel Kuby*
Maria Labounskaya*
Joyce B. Ladar
Darlene A. Lander*
Isa Lang
Judy and Mark Langberg*
Evelyn Langer*
Connie and Harvey Lapin
Julie and Cary Latimer
Gertrud Laufer
Lawrence Livermore
National Laboratory*
Judith and Joseph Leader
Jean Lee
Kay C. Leeb*
Jeff Leeds
Leatrice and Benjamin Lees
Stephen Leipziger
Barbara Leopold*
Adeline Lerner*
Shirley and Joseph Lerner
Jane and Mark Leshinsky
Inna and Yuri Letuchy
Gayle and Harold Leventhal
Martha Leviant
Ruby Levin*
Sue and Marv Levinson
Dina and David Levitas
Ed Levy
Ilse and Hans Levy*
Mildred Levy-Albert*
Joyce F. Lewbin
Brigitte Lewin*
Meryl J. Lewin*
Esther G. Lewis*
Ilse Lewy*
Fortunee Lichaa
Carol Licker
Alice and Elliot Liff
Judith Lipman
Judith Lipshitz
Dalia and Samuel Liron*
Joan E. Lissauer*
Edward Litvin
Harriet Lloyd*
Tammy and Robert Loeb
Anna Lomes
Michael Lorincz*
Martin Lu
Sophia Lubick
Cynthia B. Luce
Edith Luchs*
Amy Rosenblatt Lui and David Lui*
Violetta M. Lunt*
Ari B. Lurie*
Kristine B. Lutes
Marjory Luxenberg
Martha Mallman

Clarice and Hyman Manber*
Jill B. Mandelbaum
Curt Mandell
Zina and Alex Mankovsky
Louise H. Mann
Adriana Manousakis
Ruth and Julius Mansbach
Sybil and Stanley Marblestone
Sonia and Irwin Marcus
Carl W. Margolis
Diane and Steve Markham
Samuil Marmer*
Linda Martin
Maria D. Martinez
Ruth A. Martinez
Jeanne and Joseph Martino
Andrea Wright and David Marzane*
Steven J. Masover
Julie Mayer
Elaine Mazer
Ida and Alexander Mazo
Lisa and Rob McCann
Barbara and Tom McCarthy*
Shana and Timothy McCracken



"We've sponsored the three-month-long Jewish Home's Summer Arts Festival since 2001 because it speaks directly to our interest in the performing and visual arts," say Dorothy and George Saxe.

Judith and Michael McCullough
Peggy McLevin
Joan and Howard Mechalovitz
Patricia Mednick*
Victoria and Anatoliy Meklin
Toinette and Victor Menashe
Dinah Haken and Harold L. Meshel
Lillian Michaels
Fruma Mikhilina*
Elin and John Mikula
Barbara Miller

Janet Perino and David R. Miller
Elizabeth and Lewis Miller*
Juliet Mills*
Isaak Milshteyn*
Mira and Igor Mineyev
Norma and Harry Minkin*
Ursel S. Minkin
Bessie Mintz*
Joanne Mitchell
Izabella T. Miyasaki
Diane and Steve Markham
Beate Mohr*
Jane and Clem Molony
Aaron Monsky
Florence and Ralph Moon*
Barbara and Daniel Morafka*
Elaine Morgan*
Sandra and Jeff Mori
Letitia and Gary Morris
Reah S. Morton*
Dara and Gerald Moskowitz
Sue and Jerry Moss
Milton M. Mozen
Bess Ann Murray
Shelley and Michael Nagel*
Gloria and Avner Naggar*
Patricia T. Nagle*
Diana H. Naparst
Ilya Nasilevich
Marina Nasilevich
Bobbie Nathan
Diane and Robert Neuhaus
Constance and Daniel Neustein*
Marilyn and David Newman
Janice M. Newman
Jeanne S. Newman*
Nancy and William Newsome*
Irina Rozen and Marlen Neymark
Yio Lin Ng
Karen and Vaso Novakovich
Vera Nusbaum
Miriam Ofer*
Susan Freiwald and Eric Olson
Boris Oskotsky
Hilda and Morton Owens*
Ellen and Scott Page*
Florence and Owen Pallakoff
Norma M. Panina
Justine and Howard Parker
Beth and Charles Pascal
Adele and Robley Passalacqua*
Charlotte E. Peary
Mark Pechersky
Valeria Perlova
Ruth M. Philip*
Ursula and Hans Philippi*
Talia and Edgar Pierluissi
Vitaly Pikarevich
Shirley and Jim Pinfeld
Audrey F. Pollack*
Maxine Pollak*
Bernice Polonsky
Jack Posnick
Shirley L. Press
Virginia J. Prince
F. Rebeca Quintara
Lynn and Israel Rabinowitz
Yvonne and Sidney Raffel*
Jennifer F. Raika
Boris Rakita
Valeska and Robert Rantz
Aleksandr Rashkovskiy
Raisa Rashkovskaya
and Vadim Rashkovskiy
Diane and George Rauchweger
Larisa Rayzberg
Marc Reiner
Adele Malamud
and Michael Reingold*



"I want to give all my tzedakah money to the Jewish Home, where Grandpa Jack lived" pre-schooler **Emmy Etlin** told her father, Craig. She proudly made her gift in person to the Jewish Home's Rabbi Sheldon Marder.

Joyce Remak*
 Carol and Gerald Richmond
 Susanne Riess*
 Diane Rittenberg
 and Maureen Rittenberg
 Yemil Rivera
 Beverly D. Robbins
 Jo Ann and Daniel Robbins
 Michael Rodes
 Madeleine S. Rose
 Linda and Edward Rosen
 Melba and Guy Rosen*
 Maureen and Manuel Rosen*
 Carol Ross*
 Barbara and Hillard Ross
 Aldo J. Rossetto
 Frances and Irwin Roth
 Ann and Don Rothblatt
 Fonda Rothblatt
 Morris A. Rothman*
 Mildred and Leonard Rothschild*
 Leatrice Bohne
 and Monroe C. Rothschild*
 Sura and Azya Rubalskiy*
 Ingrid and Wayne Rubin
 Bella and Yefim Rubin
 Ellen and Harry Rubinchik*
 Carole and David Rubinger
 Yelizaveta and Ilya Rubinshteyn
 Beryini Saca
 Mary and Eugene Sacks*
 Edith Sadewitz*
 Helen and John Salan
 Sylvia Salomon*
 Helen and Sam Saltsman*
 Mr. and Mrs. Bernard Samuel
 Samele and Byron Samuel
 Edith Samuel*
 Hannah G. Samuels*

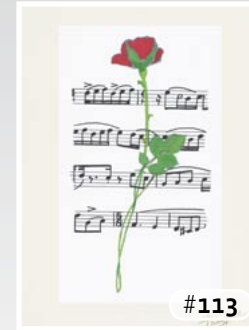
Rhoda and Peter Samuels
 Ilene Sanford
 Laurie and Jeffrey Santos
 Reva Saper
 Mary E. Sapiro
 Meyta Sapozhnikova
 Esther Friedman
 and Stephen Saribalis*
 Norma and Joseph Satten*
 Marc E. Savoy
 Lee Ann Slaton and Gary Schaffer
 Joan and Ernest Schanzenbach
 Nancy and David Scharff*
 Gloria and Bud Scheideman*
 Charlotte and Bernard Scheier*
 Hillary and Kevin Scheier
 Ludwika Schein*
 Susana and Hana Scheiter
 Lila B. Schiller*
 Denise and Kenneth Schims
 Ruth and Bruce Schlesinger
 Schor Family Foundation
 - Sherry and Howard Schor*
 Jean and Richard Schram*
 Susan Schramm
 Berta and Paul Schreier*
 Cheryl N. Schultz
 Linda and Alan Schwartz
 Inge Schwartz
 Marilyn and Paul Schwartz*
 Frances and Meyer Segal*
 Doris C. Segale*
 Minnie and Gregory Selikin*
 Linda Semi
 Rita and Konstantin Shakhmeyer
 Bella Shamovsky
 Barbara and Dolph Shapiro
 Frieda Shapiro
 Noreen Shana Shapiro*
 Larry J. Shaw*
 Nancy D. Shaw*
 Rita Sheidgant*
 Diane A. Shemanski
 Joan H. Shemanski*
 Maya and Norm Shendon
 Gertrude and Rubin Sherwin
 Raisa Shimberg-Risman
 Inna Shivack
 Pearl Pooner
 and Pavel A. Shkuratov
 Musya and Iosif Shneyder
 Oksana and Boris Shor
 Cecilia Shraibman
 Esther Shub
 Raya Shuman
 Luda B. Shuster*
 Lia and Arkady Shusterman*
 Fay Sibell
 Sylvia and Albert Siegel*
 Shelley Brown and Alan Siegle
 Allison Sievers
 Liliana Sigalova
 Maxine and Alan Sigel*
 Harriet and Harold Silen*
 Toby Silver
 The Cottages at Silverado
 Homeowners Association, Inc.
 Audrey and David Silverman
 Sharon and Leonard Silverman*
 Naomi Silverstein*
 Suzanne E. Silverstein*
 Marilyn Schneider
 and Edward A. Simon
 Lucy and Ilya Simovsky
 Christine and Lester Singer
 Klavdia and Ervin Skoretsky*
 Irina Feldman and Sergey Skoretsky*
 Robert L. Slesnick*
 Philip Smaller

Faith and Willard Smith*
 Freddie Sobel
 Ruth Soforenko
 Joan and Herschel Solomon
 Irena Terterov
 and Vladimir Solomonik
 Lev Soltanovich
 Ronald C. Some
 Michelle and Dennis Sosa
 Mary and David Sperber*
 Doris J. Sperber*
 Marcia and David Sperling
 Melanie Sperling
 Rose L. Spindel
 Ella and Luke Spitkovsky*
 Paul Spitz*
 Karen and Samuel Spivack
 Sandra Spring
 Susanne Spritzer*
 Tasha and David Stadther
 Susan and John Stapp
 Betty and Nathan Starr
 Arlene and Bud Steinberg*
 Walter R. Steinberg*
 Jacqueline and Norman Steiner
 Lee Ann and Paul Steiner*
 Charlotte and David Stern*
 Martha and Jerome Stern*
 Joan C. Stern
 Barbara and Charles Stevens
 Donna and Hayden Stewart
 Harold Stoll
 Marianne Strauss
 Mollie Strauss
 Lila Stridiron
 Greta Stuehler*
 Berta and Donald Sugarman
 Marilyn Sugarman
 Miriam E. Suslow*
 Svetlana Sviridova*
 Eric Swagel
 Shelly Swanson
 Betty and Victor Szeinbaum*
 Beatrice and Robert Taines
 Nancy and Howard Tamler
 Beatrice H. Tannenbaum
 Rachel Tasch
 Audrey Tatsuno
 Susan and Harold Tauber
 Ketty and John Taylor
 Abigail Teisch
 Douglas Temkin
 Martha and Peter Tenenbaum*
 Joanne Tick*
 Leslie and Stephen Ticktin
 Rose Ann and Philip Tobin
 Ethel Sinofsky and Isidor Tolpin
 Rosalind and Greg Tolson*
 Loe A. Tolson*
 Florein P. Trager*
 Ruth C. Traver
 Mary Treuhaft
 Valentina Treyger
 Ida and Arnold Tsikerman*
 Eugenia G. Tsyporin*
 Charlene and Sid Tuchman
 Ruth and Cyril Tukeman*
 Jean and Marcus Turk*
 Glenn M. Turner
 Sharon J. Udkoff
 United Way of America
 Marcella Vann
 Tatyana Vasilkovsky
 Arkadi Vayntrub
 Eugene Veklerov
 Nadya and Sam Veynrob
 Linda and John Viargues*
 Mina Vidrevich
 Marina Volchenok

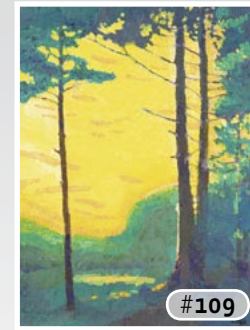
Avram Volfovsky*
 Georgee and Jeff Waldman
 Vivian and Larry Waldman
 Lore and Fred Walker
 Leslie Wandel
 Alan M. Warshaw
 Lucile M. Wasserman
 Esther R. Waterman*
 Helene Weber
 Arthur Wehl
 Pauline and Julian Weidler*
 Mimi Weil
 Leni and Rolf Weil
 Arden and Bill Weinberg
 Lila Weinberg*
 Betty and Sanford Weinberg*
 Heidi M. Linsmayer
 and Bernard Weiner
 Sally and Charles Bob Weiner*
 Florence Weiner
 Susan and John Stapp
 Mildred Weiner*
 Phillip Weiner
 Roberta Weiner
 Stephen E. Weiner*
 Helen and Belson Weinstein*
 David Weinstock*
 Herman H. Weintraub*
 Dorothy J. Weiss
 Franklyn Weiss
 Linda and George Wertheim
 Dorothy and David Wexler*
 Ruth A. Wilkerson
 Ruth and Rene Willdorff*
 Diane and Robert Winokur
 Vera Winston
 Cecile E. Winton*
 Diane and Stephen Wise
 Julia and Allan Wofchuck
 Mildred Wohl*
 Vesta Jean and Elliot Wolf
 Lee Wolfe
 Rhoda and Sheldon Wolfe*
 Alan Wolfes
 Sybil and Adrian Woodhouse*
 Julie and Murray Woolf
 Ann Rasmussen and Wendy Worthley
 Emma and Mark Yakubovich
 Anne-Marie and Elliot Yellin
 Jean H. Yerman*
 Liya and Moisey Yoffee
 Gay and Bernard Young
 Peggy and J. Luis Zabala
 Lore and Berthold Zanders*
 Pearl Zeimer
 David R. Zemansky*
 Barbara Rothenberg
 and Marshall Zemon*
 Marilyn and David Zimmerman*
 Carol and Ron Zuckerman
 Lyudmila Zvyagilskaya*
 Anonymous (13)

We have made every effort to ensure that our lists of supporters are up to date. It is possible that a name may be misspelled or omitted. If so, please accept our sincere apology, and kindly notify our Development department at 415.406.1107 so that we can make the appropriate change to our records.

THE JEWISH HOME WILL HELP YOU REMEMBER THE SPECIAL PEOPLE IN YOUR LIFE AT THOSE SPECIAL TIMES OF THE YEAR...



#113



#109



#111



#107



#105



#114

... whether it's Rosh Hashanah, Chanukah, season's greetings, a birthday, Passover, Mother's Day or Father's Day — or just to let someone know you're thinking of them.

It's as easy as 1. Select your card(s) 2. Provide name(s) 3. Make your contribution

The Jewish Home's card service provides 15 beautiful designs to choose from, featuring artwork created by Jewish Home residents.

Provide us with the name of an individual, or a list of your family and friends. We will prepare your card(s) with your personal message and send it in time to commemorate the special day you indicate.

The minimum contribution for a single card is \$18. Order 5 or more cards, and the price per card is just \$15.

All card purchases are tax-deductible. Best of all, every card you buy helps to enrich the lives of Jewish Home residents.



#101



#110



#106



#102



#112

To order:

Call: Development office 415.406.1107

Online: www.jhsf.org/cards

Visit this website for the full selection of seasonal cards.

As always, we are grateful for your support.



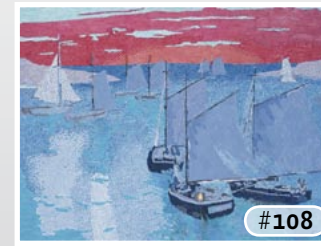
#103



#104



#115



#108



Leaving an Enduring Legacy

LEGACY LEADERS ARE SPECIAL SUPPORTERS WHO HAVE REMEMBERED THE JEWISH HOME IN THEIR WILLS OR THROUGH OTHER ESTATE GIFTS, THEREBY SECURING THE FUTURE OF OUR MISSION AND THE ESSENTIAL SERVICES WE PROVIDE TO THE ELDERLY.

The Captain Julius Friedman Society honors these leaders who have made a legacy gift to the Jewish Home. Julius Friedman's generosity enabled the establishment of the current Jewish Home, and exemplifies the Jewish tradition of charitable giving. Membership to the Captain's Society is given to all those who have made an estate gift commitment to the Jewish Home.

BECOMING A MEMBER OF THE CAPTAIN'S SOCIETY IS A SIMPLE TWO-STEP PROCESS:

1. Include the Jewish Home in your estate plans – by bequest in your will or trust; beneficiary designation of your retirement plan or life insurance; or life income gift.
2. Please let us know the plans you have made. Contact Mark Denton, director of Development, at 415.469.2323, or via e-mail to mdenton@jhsf.org.

WE THANK THE FOLLOWING MEMBERS OF THE CAPTAIN JULIUS FRIEDMAN SOCIETY FOR THEIR GOODHEARTEDNESS AND FORESIGHT.

Helen M. Adler
Maureen E. Adler
Millie and Aron Aronovsky
Jakob A. Atlas
Marion Baer
Judy and Bret Bantz
Patricia and Ernest Belden
Randi and Robert Belot
Jeanne and Daniel Benatar
Helle and David Berger
Janice and Dennis Berkowitz
Joan and Burton Berry
Samuel D. Berzin
Sheila Audrey Blecher
Samuel S. Borman
Margot E. Braun
Charlie and Herbert Brown
Iris Bulasky
Ann and Herman Burger
Galina and Alexander Capelson
Rita Horn and Dennis Cassan
Shari Chamitoff
Belle and Jeffrey Cohen
Harold Combs
Rowena W. Cooper
Helaine and Richard Darling
Charlie Davis
Roslyn R. Dienstein
Linda Diller
Sara and Harold Epstein
Irene K. Epstein
Laurel and Elliott Feigenbaum
Rhoda Feldman
Barbara and George Finck
Abrea and Lloyd Firestone
Doris Flamm
Ana C. Florez
Max Frank
Kathryn and Richard Friedman
Lya Galperin
Rowena and Bud Gansel
Gay O. Glikman
Devorah I. Goldberg
Judy H. Golding
Jeannette Goldner
Norma and Claude Goldsmith
Eva M. Goldsmith

Deborah and Ronald Gordon
Svetlana and Arkady Gozberg
Robert L. Greenberg
Phyllis and Jerry Greenblatt
Patricia P. Greenhood
Gail S. Grossman
Hyman Gurman
Liane Ofenham-Hall and John Hall
Irene and Stephen Halpern
Craig Headman
Mary and Douglas Heller
Sheila Hochman
Stephen R. Holman
Margo Horn
Charlotte and Jerome Hyman
Roselynn and Steve Itelson
Ahuva and Emanuel Jolish
Susan Julius
Svetlana and Bob Kaff
Ronald Kahn
Barbara and Donald Kamler
Rima Kantorov
Walter Kaplan
Yuri Kaplun
Ellen L. Katske
Nancy and Kenneth Kaye
Ida and Oleg Kipnis
Helen Landsman and Robert Kirby
Ruth and Heinz Kochman
Sidney S. Konigsberg
Elena and Alexander Korot
Nadine and Roy Koss
Arlene and Steve Krieger
Beatrice and Henry Krivetsky
Valentina Kuznetsova
and Viktor Kuznetsov
Hedi Langfelder
Ann and James Lazarus
Larry M. Letofsky
Barbara and Morton Levinson
Shanna Levinson
Rosanne and Alvin Levitt
Jacquelyn Levy
Helen and Herman Lewin
Carol Eisenberg
and Raymond Linkerman
Paula and Wayne Magliozzi

Rosario and Sydney Malkoo
Lisa and Robert Maloff
Victor L. Marcus
Lillian Markinson
Gladys and Larry Marks
Melanie R. Marks
Albert Martin
Andrea Wright and David Marzane
Eleanor and Jerome Mednick
Diane and Jeremy Merrill
Galina and Michael Milgran
Letitia and Gary Morris
Roslyn and Mervin Morris
Nannette Moss
Ann and Joseph Nadel
Esther and Henri Nahoum
Peter Neubauer
Jan and Robert Newman
Beverly Norman
Kent D. Owen
Doris and Sidney Pearlman
Sallie Ann and Robert Perliss
Melvin S. Pincus
Bernice Polonsky
Roza Polovinchik
Vera Kostiuok and Sergey Pushnof
Mary and David Rabb
Hilda Richards
Janis Riney
Walter Riney
Barbara and Saul Rockman
Rochelle and Jeff Rondinone
Ilse and Herbert Rosenbaum
Betty Rosenthal
Barbara and Jack Ross
Morris A. Rothman
Niki Rothman
Janet and Zev Rubenstein
Esther Rubin
Sharon Litsky and John Sampson
Dorothy and George Saxe
Adrienne and Norman Schlossberg
Yetta Schneider
Ruth Schoenberg
Annette and Harry Schriebman
Myrtle and Joel Schwartz
Katherine Lautz and Sol Schwartz

Ada E. Schwarz
Sylvia Selim
Lynne Semi-Ueligitone
Larry J. Shaw
Rita Sheidgant
Lois Shenker
Marina and Danil Shnaydman
Pauline E. Forman
and Albert E. Silverstein
Bette A. Simon
Laurie H. Sizemore
Roberta Agre and Allan Sluizer
Paul Spitz
Susan and John Stapp
Beverly and Roman Starno
Anne M. Stein
Paul May and Frank Stein
Nelson Stone
Marianne Strassman
Lila Stridiron
Greta S. Stuehler
Selma and Sanford Tandowsky
Dorina and Sidney Tanner
Mikhail A. Tayts
Betty A. Toole
Kathe Traynor
Alla and Igor Ushomirsky
David Varshavsky
Gertrude G. Vederoff
Alla Kaper and Filip Vinengauz
Avram Volfovsky
Dorothy and Paul Wachter
Barbara L. Wallerstein
Liselotte N. Weber
Yuko Kuraki and Eric Weichardt
Clark Weisman
Betty J. Weiss
Lyllian and Alan Wendroff
Linda and George Wertheim
Michael B. Wise
Geraldine J. Yorkis
Hanna Zanger
Joan L. Zentner
Norma and Harold Zimmerman

Fulfilling Our Promise

Fulfilling Our Promise, the Jewish Home's Comprehensive Campaign, raised a record-setting \$55 million.

These funds enhanced the Home's endowment and supported the construction of the new Barbara & Richard Rosenberg Family Center. The 55,000-square-foot center houses a modern, state-of-the-art kosher kitchen that prepares 500,000 meals annually; the Samuel & Leah Osher Clinic, comprised of 13 up-to-date health clinics that offer residents care ranging from audiology and dentistry, to massage and acupuncture; and an innovative research center for the study of aging issues critical to the residents of the Home and to the community at large. The all-new Eugene Friend & Julian Davis Creative Arts Center, synagogue and Herbst Fitness Center, as well as the newly-renovated gift shop and garden café, are adjacent to the center.

Thank you to everyone who contributed to the campaign's success.
You have helped to make our promise a reality. >>>

COMPREHENSIVE CAMPAIGN DONORS

Bernard Aarons Living Trust
In memory of Tina Aarons, mother of Bernard Aarons
Marilyn R. Abbott
In memory of Nat Sherman
Anita and Marc Abramowitz
Estate of Harriett Abrams
Mari S. Abrams
Lotte E. Adelson
Martha and Michael Adler
Irina and Alexander Aerov
Julius Aires
Barbara and William Alexander
Doreen Alper
Olga and Arkady Alperin
Marjorie and Harry Ambrunn
Irene and Norman Amdur
Ruth Andersen
Bessie Anglim
Patty and Benjamin Anixter
Dolly and Arnold Breit
Margery D. Anson
Ruth Mines and Lee M. Appel
Joyce Appelbaum
Betty and Pious Arena
Joanne and Bernard Arfin
Millie and Aron Aronovsky
Jakob A. Atlas
Linda and Gary Attell
Olga Kashlinskaya
and Yevgeniy Babichev
Margie Siegan and Ronald Bachman
Barbara and Gerson Bakar
Albina and Ilya Balanov
Elaine Bandalin
Rose and Ralph Barkoff
Philanthropic Fund of the JCEF
Marcia and Steve Barkoff
Sharon Gustafson and Gary Barlas
Annette and Bert Barnett
Ludmilla Baron
The Worth M. Barton Trust
– Craig S. Barton
Allan I. Basbaum
Lee and Franklin Battat
In memory of Herman Werdesheim
Julien R. Bauer
Dorothy and Bertrand Baylin
Ann and Irwin Bear
Wendy Bear
Sylvia and Morton Bearman
Dorothy and Joseph Becker
Lawrence G. Becker
Janice and A. Phillip Beiser
Patricia and Ernest Belden
Gerry Belling
Daniel Benjamin
Lyubov Serebryanaya
and Vladimir Berdichevskiy
Allan Berenstein
Joyce and Sidney Berenstein
Frances and Leonard Berger
Sally L. Berger
Grayce Bergman
Kenneth Bergman
Vernon H. Berkowitz
Aline and Warren Berl
In honor of Dr. Jim Davis
Joanne and Alex Bernstein
Arlene and Philip Bernstein
Sheila Bernstein
Janet R. and Nilo Bertoloni
Samuel D. Berzin
Suzanne Bettinger
Alexandra and Yuriy Beygman
Shirley A. Bierly
James S. Blattner
Lenore and Charles Bleadon
Mitzi L. Dean and Stuart H. Blecher

Sheila Blecher-Kuniyoshi
Ellise and Hendrik Blom
Estate of May L. Bloom
In memory of May and Jerome Bloom
Doris and Ben Blum
Philanthropic Fund of the JCEF
Ann and Gordon Blumenfeld
Estate of Dorothy
and Harry Blumenthal
Elaine and Neil Blumenthal
Mira and Zalman Blyumberg
Abby L. Bogomolny
Leonid Bokarius
Nina Bonos
Marilyn and Robert Borovoy
In honor of Adele K. Corvin's birthday
Lina Borovsky
Yevgeniya and Nikolay Boyko
Dolly and Arnold Breit
Ardis and Alfred Breslauer
Isabella and Leonid Briskin
Catherine Brock
Ruth Brodie
Andrea Jacoby and Robert Brody
Celia Bronstein
Zina and Jacob Bronstein
Amy and Reed Brown
Roman Bruk
Lilly Budak
Jane and Zole Buks
Ann and Herman Burger
Jane T. Burrows
Elizabeth and Sandor Burstein
Karen and Steven Busch
Marian and Allan Byer
Anne Cahn
Sharon A. Camhi
Miriam and Logan Campbell
Paula Campbell
Edgar Cantor
Margot and Francis Cappel
Lorraine M. Carrigg
Mary and George Casey
Shari Chamitoff
Charles Schwab Foundation
Matching Gift Program
Doris T. Chives
Sandra and Harve Citrin
Burton M. Greenberg
and James T. Clavin
Jean and William Coblentz
Ruth and David Coen
Helene and Alvin Cohen
Sandra Cohen-Wynn
and Gertrude Cohen
Harry Cohen
Marilyn Hoffman and Noam Cohen
Marsha Krinsky and Fred Cohn
Roberta and Leonard Cohn
Carolyne and Michael Cohn
Alan Coleman
Ruth and Ted Coleman
Leah Colton Trust
Marion R. Colton
Columbia Foundation
Donna M. Cooper
Adele and William Corvin Family
Carol and Richard Cutler
Esther W. Daniel
Shirley Daniel
Milton Danoff
In memory of Audrey Davis
The Davis Family
Myrna and Donald DeFriesse
Marlita Kahn and Luis Delgado
Jobyna and John Dellar
Barbara and David Deutsch

David L. Diller
Paul M. Diller
Harold and Annette Dobbs Family
Irina Dondysh
Edith and Benjamin Dorfman
Merlin Dorfman
Betty and Mervyn Dowd
Maryann Dresner
Helen and Jeffrey DuBowoy
Nathan Dwiri
Betty C. Eberhardt
Carol Ann and Harvey Edelman
Shirley and Benjamin Eisler
Staci Eisler
Sylvia and Eric Elssesser
Ellen F. Emold
Mark Engelman
Celia Enslar
Harry Erlich
Debra L. Estrin
The Eucalyptus Foundation
– Frances and Theodore Geballe
Desi and Gershon Evan
Fanya Eveleva
Frances and Louis Everett
Jocelyne and Joe Falk
Paula Falk
Rebecca Arons and Eric B. Fastiff
Shirley and Vincent Fausone
Anatoliy M. Fayngold
Dina Fayngold
Adella and Jonathan Feinberg
Jackie and Donald Feinstein
Leslee and Wayne Feinstein
Heide and Robert Feldman
Lynne F. Feldsher
Jeanne and Leland Felton
Anita and Stanley Finkel
Ruth Finkelstein
Lynne and Fred Firestone
Abrea and Lloyd Firestone
Susan Fischer
Mary S. Fisher
Newman Fisher
Alla and Boris Fishkin
Ana C. Florez
Iosif S. Flyash
Sam Flyash
Sharon Foster
Muriel and Clyde Fox
Lilli and Max Frank
Lynne and Roy Frank Family
Ruth Franken
Diane and George Frankenstein
Ann and Lewis Freedman
Uri Freeland
Eva and Stephen Freeman
Norman T. Freid
Isaak Freylikhman
Harriet and Lawrence Fried
Ann and Mark Friedland
Sylvia Friedland
Paulette Meyer and David Friedman
Rona and Donald Friedman
Harriet and Emanuel Friedman
Rita and Mel Friedman
Miriam Friedman
Howard and Phyllis K.
Friedman Family
Richard H. Friedman
Kristina Kiehl and Robert Friedman
Family of Eugene and Elinor Friend
Alberta and Roy Fross
Walter Fuchs
Dore and James Gabby
Bessie and Leo Gabow
Gaia Fund
Anna and Josef Galanter
In memory of Khaya Vestel

Jane Galerkina and Gennadiy Galerkin
Lya and Roman Galperin
Rita and Mikhail Gambarin
Lucy Gambarina
Haim Gamburg
Rowena and Bud Gansel
Lynn and Claude Ganz
Brenda and Gerald I. Ganz
Dena G. Gardi
Vlada and Arkadi Gelfond
Vladimir Gelfond
Mona and Dan Geller
Barbara and Murray Gelleri
Inna and Aleksandr Gershfeld
Ira and Leonore Gershwin Designated
Philanthropic Fund of the JCEF
– Jean and Michael Strunsky
Eve M. Bernstein
and Alex Gersznovicz
Vadim Gertsvoif
Arlene M. Getz
Rosalie and Harold Gevertz
Carol Reif and Jeffrey Gilman
Joann Glaser
The David B. Gold Foundation
Sandra and Henry Gold
Rosabelle Gold
A.M. Goldberg
Phyllis and Bernard Goldberg
Deborah Goldberg
J. Eugene and Faye Barrett Goldberg
Philanthropic Fund of the JCEF
Ann and Roy Goldberg
Sarah Goldberg
Yuri Goldenshteyn
Marlene S. Goldfarb
Bernice Goldman
Lisa and Douglas Goldman Fund
Bette and Gerald Goldman
Marcia and John Goldman
Richard N. Goldman
Corinne and Walter Goldman
Eva M. Goldsmith
In memory of Helene Cohen
Estate of Marie H. Goldsmith
Shirley and Charles Goldstein
Jerome Goldstein
Cathy and Philip Goldstein
Karen and Jose Gonzales
Ruby Goodman
Elaine and Kieve Goodstein
Tamara Gordiyenko
Chandra and Leonard Gordon
Brenda and Hugh Gottfried
Svetlana and Arkady Gozberg
Krish Rene Johnson
and Edmund Grant
Bernice Gray
Bobbie and Bill Green
Susan and Robert Green
Frances and William Green
Phyllis and Jerry Greenblatt
Constance and Milton Greenfield
Kay and Leland Greenwald
Mimi and Leonard Greenwold
Phillip Greer
Barbara Gregoratos
Brian Grey
Elizabeth and Hans Gronowski
Barbara and Kurt Gronowski
Relda Grossman
Sandra and Philip Grubstick
Betty P. Guidi
Rita M. Guiney
Walter and Elise Haas Fund
Miriam and Peter Haas Fund
Evelyn and Walter Haas Jr. Fund
Rochelle Haber
Henry O. Haertel



Luba Haertel
Frances and Raymond Hagan
Arden Hamilton
Debra Reynolds
and Steven Hammerschlag
Ed J. Harlem
Caryn and Ian Harris
Judith and Jerrol Harris
Ted Harris
Emile Harrosh
Harsch Investment Properties
– Jordan Schnitzer
Preston Hartman Trust
Janet Hastings
In memory of Esther Moskovitz and Margaret Berzin
Marcia and William Hastings
Berna and James Haws
Craig Headman
Werner Hebenstreit
Heckscher Family Trust
Barbara Heil
Stephanie and Howard Hellen
Mary and Douglas Heller
Gloria and Raymond Heller
Hellman Family Foundation
– Chris and Warren Hellman
Mina and John Hendricks
Melissa Hennessey
The Herbst Foundation
Midge and Sylvan Heumann
Eve and Vernon Heyman
Joan and Gary Heymann
Wallace B. Hirsch
Faye and Edward Hirschberg
A. Arthur Hirschhorn
Sheila Hochman
Jacqueline L. Hogan
Toby S. Levy and Rick Holman
Stephen R. Holman
Edith and Bernard Holtz
Sondra and Stan Holwitz
Arlene and Jonathan Horowitz
Joann and James Hurwitz
In memory of Herb Greenhood
Jack Hymes
Trude K. Ingram
Roselynn and Steve Itelson
Allan B. Jacobs
John P. Jacobs
Judith and Ralph Jacobson
Susan Jaeger
Jewish Community Endowment Fund
In memory of Jim Joseph

Inger Johnsen
Estate of Relda R. Johnson
Adrienne H. Jonas
Sofiya Kabanovskaya
Roslyn and Donald Kahn
Barbara and Donald Kamler
Arnold Kamrin
Maurice Kanbar
Shirley and Martin Kantoff
Yudolf Kantor
Mary and Anatoly Kaplan
Burton Kaplan
Rhoda and Zane Kaplan
In honor of Norma and Bill Siskin's 60th wedding anniversary
Eleanor and Charles Kapner
Grigory Karanovich
Yelena Karanovich
Marjorie and David Karp
Joseph Karp
Betty and Brian Katcher
Dora Kats
Tatyana Rotenberg
and Larry Katsanovich
Thelma and Irving Katuna
Helaine and Ronald Katz
Doris and Gordon Katznelson
Nancy and Ken Kaye
Shirley and Louis Kearn
Dana and Maury Kelisky
Lee and Herbert Kessler
Sara Keyak
Anita and Victor Keyak
Ella and Mark Kilun
Ruth and Heinz Kochman
Susan Koenig
James Hoover and Joseph Konick
Oscar B. Koolpe
Koret Foundation
Gabriele and Albert Korn
Hedda Kornfeld
Jacob Koshevatsky
Yvonne and Daniel Koshland
Catherine and James Koshland
Lyudmila Kotlyar
Zinaida and Valera Kovalevsky
Abby Kovalsky
Peggy and Jim Kraft
Stephanie and Morris Krantz
Zhanna and Anatoliy Krasilovskaya
Terry Kraus
Lilia and Vladimir Kresin
Betty and Stanley Krieger
Arlene and Steve Krieger
Beatrice and Henry Krivetsky
Ruth and Henry Kruger
Lily Krulevitch
Dana L. Kurtzman
Caryl and Ken Kurtzman
Sylvia F. Ladar Trust
Howard Lader
Elizabeth Land
Darlene Lander
Margit Landesmann
Stacey and Scott Lane
Rose L. Langsam Trust
Joan LaPedis
Robert L. LaVine
Libby Lawrence
Gail and Stephen Lazarus
Sherry and Thomas Lazore
Ken and Bobbie Lebovitz
Sheila and George Lederer
Alexandra and Wolfgang Lederer
Warren G. Lefort
Lois K. Lehrman
Tillie and David Leibel
Steven Leibovitz
Claire Leibowitz

Stephen Leipziger
Betty and Herbert Leland
Philanthropic Fund
Muriel Leland
Golden S. Lerman
Marily and Mark Lerner
Edward Less
Julie C. Letofsky
Levi Strauss Foundation
Matching Gift Program
Levi Strauss Foundation
Social Benefits Program
Martha Leviant
In honor of Norma and Bill Siskin's 60th wedding anniversary
Estate of Julian B. Levin
Edith and Paul Levin
Ralph Levin
Donna and Stanley Levin
Sydney Levin
Sharon and Jerry Levine
Jerry Levine Special Care Fund
Nora and Dan Levinson
Eva and Michael Levinson
Barbara and Morton Levinson
Nancy and Stephen Levinson
Shirley and Albert Levy
Maria and Allan Levy
Ilse and Hans Levy
Phyllis and Harold Levy
Jacquelyn Levy
Mildred Levy
Roland Levy
Gene and Harry Lewin
In memory of Egon B. Stein
Libby and Werner Lewin
Hildegard Lewis
Pamela G. Lewis
Lucille and Henry Libicki
Greta Liebman
Irving Lind
Tatyana and Leonid Linetsky
Sheila R. Lipstein
Susanne and Ron Lissak
Joan Lissauer
Joel P. Litvin
Greta Livingston
Elena Lobetsevich
Marcus Loorya
Fern and William Lowenberg
Arnold Luber
Anry Lubick
Olga Lunskeya
Marjory F. Luxenberg
Evelyn C. Madfes
Melanie and Peter Maier
Harold R. Maine
Conni Mainne
Lois and George Maisels
Alex Makievsky
Ludmila and Valentin Malin
Marion and Morton Malkofsky
Susan and Jay Mall
Betty M. Mann
Nicky and Jerry Manning
Sonya Manoylo
Inna and Jacob Manyak
Eileen and Isac Marchasin
Florence and Steven Marchick
Victor L. Marcus
In memory of Alice Berman
Barbro and Bernard Osher
Fira and Arkady Ostrovsky
Lois and Joseph Ostrow
Morton H. Owens
Florence and Owen Pallakoff
Ruth and Rod Parker
Leslie and Leonard Paul
Doris and Sidney Pearlman
Miriam and Lawrence Peckler

Steven Masover
Abraham Massuda
Rodolfo J. Mayer
Vera Meibergen
Victoria and Anatoliy Meklin
Tasia R. Melvin
Cynthia and Robert Mercer
Diane and Jeremy Merrill
Milton and Sophie Meyer Fund
Myra and Eugene Mielke
Gabriella Belai
and John Miffleton
Barbara and Jack Mihalovich
Fruma Mikhlina
Galina and Michael Milgrom
Janet Perino and David R. Miller
Lynn and Robert Miller
Judith and Walter Miller
Margaret Epp Miller
Philanthropic Fund
– Barbara and William Isackson
Juliet Mills
In honor of Adele K. Corvin's birthday
Isaak Milshteyn
Ruth V. Mines
Joanie Misrack
Mildred and Robert Mizrahi
Beate Mohr
Aaron Monsky
Juel and Frank Morris
Letty and Gary Morris
Roslyn and Mervin Morris
Morris Morris
Carol Morrison
Denis D. Moskofian
Seth Moskofian
Milton Moskofitz
Marion and Kurt Mostny
Mount Zion Health Fund
Marie Mourad
Irene and David Moussa
Eleanor and Larry Myers
Jamie and Mark Myers
Irving Myerson
Alla and Michael Myslovaty
Ann and Joseph Nadel
Zoan Nafman
Esther and Henri Nahoum
Michael A. Nakhimovsky
Diana H. Naparst
Hillel Narin
Mavis Nathan
Mary and Donald Negi
Lisa and Dennis Nelson
Constance and Daniel Neustein
Catherine and Andrew Newman
Beverly Norman
Vera Nusbaum
Karen and John Nyere
Sandy and Barry Oberstein
Liane M. Ofenham
Stephanie and Daniel Offit
Eileen I. Oliver
Walter Oppenheimer
Gerald A. Ornstein
Lea and Allen Orwitz
Louise and Howard Oser
Pat and Gary Osganian
In memory of Alice Berman
Barbro and Bernard Osher
Fira and Arkady Ostrovsky
Lois and Joseph Ostrow
Morton H. Owens
Florence and Owen Pallakoff
Ruth and Rod Parker
Leslie and Leonard Paul
Doris and Sidney Pearlman
Miriam and Lawrence Peckler

COMPREHENSIVE CAMPAIGN DONORS

Pell Family Foundation
– Eda and Joseph Pell
Lawrence E. Pelzner
Eva Perata
Lilian and Ilya Perry
Murray Persky
Mary Petrovich
In memory of Helen Wise
Ursula and Hans Philipp
Bea and Melvin Pincus
Robert M. Piscetelli
Richard Plato
Gerry R. Podolsky
Neal B. Polachek
Lori and Lewis Pollack
Heinz P. Pollak
Pollat-Harris Family Philanthropic
Fund of the JCEF
*In memory of Fred Pollat and Julie
Pollat-Harris and Wilfred Harris,
in conjunction with
Joanne Bernstein*
Wendy Sue and Jeffrey Polonsky
Roza Polovinchik
Ethel M. Pont
Anita and Jack Popik
Linda and M. Laurence Popofsky
Jack Posnick
Mary A. and Patric T. Powell
Lisa and John Pritzker
Julius Quetnick
Catharine and Pat Quickert
Betty Rabin
Eva and Leon Rajninger
Estate of Stella Rakonitz
Mitchell and Shirley Raskin
Family Trust
Janet Raznick
Leonard Raznick
Gerry and Murray Regensburger
Linda and Edward Reiner
Sheila and Melvyn Reitman
Joyce and William Remak
Shirley A. Rider
Walter Riney
Carol S. Roberts
Hilda F. Roberts
Samuel and Valerie Rodetsky Trust
Anne and Martin Roher
Pam V. Rolph
Rochelle and Jeff Rondinone
Jennie D. Rose
Linda and Edward Rosen
Melba and Guy Rosen
Ilse and Herbert Rosenbaum
Lenore and Ira Rosenbaum
Ruth H. Rosenbaum
Louise and Claude Rosenberg
Phyllis and Jerry Rosenberg
Estate of Sylvia and Louis Rosenberg
Ellen and Martin Rosenberg
Ellen and Michael Rosenberg
Martha and Milton Rosenberg
Lisa and Peter Rosenberg
Barbara and Richard Rosenberg
Grace and Ronald Rosenberg
Ruth Ann Rosenberg
Rose and Theodore Rosenberg
and the Rosenberg Family
Betty Rosenthal
*In memory of Dee Dee Epp
and Julius Bloch*
Eve Yarmo and David Rosenthal
Estate of Kate Rosenthal
Lisa and Mark Rosenthal
Ellen and Elliot Ross
Mark Ross Foundation
– Mina Vitlin, Annag Chandler
and Victor Vitlin

Patricia B. Ross
Frances and Irwin Roth
Janet and Peter Roth
Fannie Rothman
Frances S. Rothman
Cecilia and Morris Rothman
The Estate of Betty Rowney
Ken F. and Hilda M. Royce Supporting
Foundation of the JCEF
– Rosanne and Al Levitt
Victoria and Vladimir Roysin
Ann and Alexander Rozenberg
June E. Rubin
Leon Rudee Family Trust
Fred Rudow
Fern and Daniel Ruth
Rita and Guillermo Saavedra
Eleanor and Paul Sade
Frankie Whitman and Sam Salkin
Ceci and Stan Salomon
Gertrude H. Samuel
Shari Samuel
Barbara and Harvey Samuels
In honor of Faye Weisberger
Marisa and Lewis Samuels
Frances and William Sandy
Ilene Sanford
Boris Sankisov
Wendy Sanoff
Jeanne and Meyer Sassoon
Dorothy and George Saxe
Lee Ann Slaton and Gary Schaffer
Barbara and Richard Schefsky
Kevin T. Scheier
Priscilla Schlesinger
Andrea Bannahias
and Sheryl Schlocker
Adrienne
and Norman Schlossberg
Schor Family Foundation
– Sherry and Howard Schor
Annette and Harry Schriebman
Janet and Albert Schultz
Nyla and Arthur Schwartz
Harold Schwartz
Henrietta Schwartz
Ida E. Schwartz
Nola Schwartz
Marilyn and Paul Schwartz
Sylvia and Sidney Schwartz
Linda Schwarz
Seiler Philanthropic Fund of the JCEF
– Ruth and Donald Seiler
Gayle and Stuart Seiler
Rita and Elizabeth Semel
Mark A. Senick
Suzanne and Theodore Seton
*In honor of Victor Marcus, and
Phyllis and Fenmore Seton's 60th
wedding anniversary*
Jo and Henry Shain
Chris J. Shaini
Madeline and Steven Shakin
Albert Shansky
Mary and Eugene Shapiro
Frieda Shapiro
Joyce Kaplan and Jerry L. Shapiro
Shana N. Shapiro
Rita Sheidgant
Maya and Norm Shendon
Sari and Franklin Shifrin
Musya and Ruvim Shikhman
Raisa Shimberg-Risman
Marianne and Herman Shine
Ellie Shkolnikova
Lia Shkolnikova
Carole and Richard Shostak
Barbara B. Shupin
Lia and Arkady Shusterman

Estate of Margaret Munzika
and Henry Shweid
Shirley P. Sichel
Alberta and Nathan Siegel
Eileen Silverberg
Melvin J. Silverman
Barbara and Sheldon Silverman
Joanie Silverstein
The Simcha Foundation
– Maribelle and Steve Leavitt
Janet and Efim Sinyak
Barbara and Richard Sklar
Emily and Alec Skolnick
Jacqueline and Lawrence Slaven
Roberta Agre and Allan Sluizer
Mary and Marshall Small
Dolly Smith
Kathryn Snow
Nadine and David Snyder
Ceevah and Irwin Sobel
Pauline and David Soffa
Valery Sokolovskii
"Someone's in the Kitchen"
Event Equipment Fund
Allan Sommer
Michelle Sosa
Marian and Thomas Soss
Dorothy and Joseph Spiegelman
Fana Spielberg
Hal and Marlene Spitz Family
Philanthropic Fund of the JCEF
Doris and Bill Spitzig
*In memory of Audrey Davis
and Carol Lachman*
Luba Stachel
Tasha and David Stadther
Rose and David Stadtnr
Susan and John Stapp
Paul May and Frank Stein
Marlene and Martin Stein
Anita and Gerald Steinacher
Bernice Steinberg
Mike, Sam and David Steinberg
Jacqueline and Norman Steiner
Lee and Paul Steiner
Anne and David Steirman
Robert and Adele Stern Foundation
In memory of Leona Inger
Maxine Chesney and Edward Stern
Martha Stevens
Harold Stoll
Anne and Sherman Strauss
Lila Stridiron
Marilyn and William Sugar
Sherri and Charles Sugarman
The Samuel Susselman
and Cora Susselman Trust
Roselyne Chroman Swig
Joyce Talal
Beverly Buller-Tannen
and Eugene Tannen
Marilyn and John Tapson
Benjamin I. Tarrant
Marilyn R. Taubman
The Herman P. and Sophia Taubman
Foundation
Sue Terry
Suzette and George Thomas
*In honor of Ken Colvin's
80th birthday*
Jean M. Thorn
Richard W. Toker
Jon Tolson
Juana and Hansi Torczyner
Carol and Norman Traeger
Sooky Trattner
Kathe Traynor
Arnold Tsikerman
Bella and Nukhim Tsukerman

Sofia and Lev Tsylov
Eugenia Tsyporin
Margo Ucko Fund
Lynne Semi-Ueligitone
and Sau Ueligitone
Dorothy Unger
Inna Vaiser
Lilya and Gregory Vaisman
Luba and Naum Vaksman
Leo Van Der Reis
Rakhil Varshavskaya
Mark Vaynshteyn
Gail and Joseph Vella
Liliya Vidgolts
Leona and Paul Vigo
Avram Volfovsky
Sally and David Volkoff
Sally and Eugene Vrana
Aimee A. Wahed
Lonna and Marshall Wais
Marilyn Yolles Waldman
and Murray Waldman
Mildred L. Wandel
Linda and Theodore Warshauer
Ann L. Weaver
Henry B. Weil and Family
Nina Weil
Dana Corvin and Harris Weinberg
Betty and Sanford Weinberg
Erlinda Weinberger
Lora F. Weiner
Steve Weiner
Helen and Belson Weinstein
Jeanmarie and Will Weinstein
Elayne and Irvin Weinstock
Elissa Finney and Steven Weisberg
Dorothy J. Weiss
Sharon and Irwin Weiss
In memory of Denise Dousman
Lotte and Sidney Weiss
Laurie and Steven Weiss
Edith and Eugene Wellisch
Marianne and Bernard Werth
Linda and George Wertheim
Dorothy and David Wexler
Michael James Wickler
Irving E. Wiener
Carolyn and Stanley Wiener
Kathy and Donald Williams
Barbara and Norman Winnerman
Greta Winter
Marian Wisnia
Mildred Wohl
In memory of Sylvia Elkins
Burton H. Wolfe
Wolfe Philanthropic Fund
– Susan and Robert Wolfe
Penny L. Wolfsohn-Enge
Sherry and Evan Wolozin
Sybil and Adrian Woodhouse
Francine and Phillip Woolfe
Anita and Ronald Wornick
Raisa Yalkitman
Stacey Silver and Jonathan Yolles
Geraldine J. Yorkis
Hilary A. Zaid
Adele and Eugene Zauber
Alice and Louis Zeman
Joan L. Zentner
Monica and Alan Zimmerman
Cynthia and David Zimmerman
Joan Zimmerman
Adele Zins
H. Elizabeth Zolowicz
Anonymous (11)

JEWISH HOME SERVICE VOLUNTEERS

PITCH PERFECT

THERE ARE MANY MEMORABLE MOMENTS AT THE JEWISH HOME FOR MERLE BECKER, A VOLUNTEER WHO BRINGS HER PASSION FOR OPERA TO RESIDENTS THROUGH HER *OPERA FOR EVERYONE* CLASSES. BUT ONE OCCASION IN PARTICULAR STANDS OUT IN HER MIND. >>>



VOLUNTEER MERLE BECKER (CENTER) BRINGS OPERA FROM THE WORLD'S STAGES TO THE JEWISH HOME. ENJOYING MERLE'S PASSION IS RESIDENT SARA FINGERMAN, WHO HAS NEVER MISSED ONE OF MERLE'S SESSIONS, AND MARK VINOGRADSKY, WHO TRANSLATES FOR THE MANY RUSSIAN-SPEAKING RESIDENTS IN ATTENDANCE.

She had already given two classes at the Home. A number of her 'students' were Russian-speaking, and although the Home's recreational activities staff had arranged for translation, Merle was not sure that these residents were "getting the sessions." At the end of her third class, she meandered past a dining room and heard humming. It was her Russian students – humming the piece they had reviewed earlier. Then, when one of the students came up to Merle, placed his hand on his heart and hugged her, she knew her teaching was understood – and cherished.

"I'm just a person who's gone to opera since 1962 and loves it," Merle says about her own expertise on the subject. But she did not gain an appreciation of the musical form until she took it as an elective in college. "I was a pianist with no interest in opera," she says. But after that class, she was hooked.

A psychotherapist in private practice for 28 years, Merle found she had time on her hands when she decided to reduce her practice six years ago. She thought she would do something related to opera, but did not know what specifically. A friend suggested she contact Mediatrix Valera, the Home's Activities director.



OPERA FOR EVERYONE'S 'DUET': MERLE BECKER AND MARK VINOGRADSKY.

In addition, Mark Vinogradsky, a recreation coordinator at the Home, translates for the Russian-speaking residents. "Mark was a music teacher in Russia, so it's easy for him to pick up the essence of what I'm teaching. We started out as two separate people, but then we became a duet," is Merle's music-inspired analogy.

Naming her favorite opera is not an easy task for Merle. "It depends on the mood I'm in," she says. "I love most everything Russian, *The Queen of Spades* by Eugene Onegin, for one. I love anything by Wagner; he's my favorite composer. Then again, I love anything by Verdi."

Merle says she derives enormous satisfaction from presenting opera to Jewish Home residents.

"There are people at varying levels of disability or age in my classes, but it's reaching all of them. Maybe they have an hour with less pain, or they remember music that's touched them in the past. Giving these sessions makes me feel connected to my late parents, and to the Jewish community. It fills me with joy." ■

Then, when one of the students came up to Merle, placed his hand on his heart and hugged her, she knew her teaching was understood – and cherished.

"When can I talk with you?" was Valera's immediate response. And soon Merle's opera classes were a regular part of the monthly activity offerings for residents.

Merle chooses a variety of subjects for her classes. It may focus on a single opera, a series on rising superstars, or on voice types. A recent session was devoted to a new opera, *The First Emperor*, written for Placido Domingo by composer Tan Dun. "It's a combination of Western and Eastern music about Emperor Qin who built the Great Wall of China," she explains.

Whatever the particular subject, Merle's commentary is supplemented with music and visual excerpts, organized by her and put together on a DVD by her 'technical support,' husband Bill Benkavitch (who, she reveals, is not an opera-lover).

JEWISH HOME SERVICE VOLUNTEERS

WE GRATEFULLY RECOGNIZE THE FOLLOWING INDIVIDUALS AND THE GENEROUS DONATION OF THEIR TIME, TALENTS, AND ABILITIES TO ENRICHING THE LIVES OF OUR OLDER ADULTS.

Pamela Abramson
Elena Acevedo
Jesenia Acevedo
Tom Adams
Helen M. Adler
Maureen E. Adler
Michael Adler
Meaza Admasu
Christina Aguirre
Lorraine Aiken
Adi Alouf
Lawrence Anderson
Sasha Andrus
Julia Angeles
Bessie Anglim
Ben Anixter
Earl Anneson
Sam Anspach
Lee Appel
Stephanie Arellano
Jakob Atlas
Marcia Bach
Bobbi Bader
Raphael Balbino
Bert Banks
Estelle Bardoff
Paula Barish
Avi Baskin
Susanne Baum
Merle Becker
Hagar Ben-Eliezer
Avi and Jonah Benjamini
Leonard Berger
Larry Bernard
Joanne Bernstein
Elizabeth Bilasano
Sharon Blevis
Sue Bloch
Darren Blum
Genevieve Bolinao
Clark Bonafe
Yvette Borja
Scott Boudewyn
Zerrel Breedlove
Anna Brodski
Ann Brown
Charlie Brown
Joshua Brown
Hilda Brunwasser
Pola Burk
Vincent Busalacchi
Marian and Allan Byer
Lorraine Cainia
Jeff Campbell
Rochelle Canaya
Stephy Capodanno
Samantha Cardenas
David Carmine
Sean Carrillo
Kristine Casipe
Lourdes Castellanos
Beverly Chan
Lauren Chan
Tommy Chan
Raymond Chau
Celine Chen
Dora Chen
Faina Cheridak
Sydney Chiong
Diana Chiu
Irene Chiu
Derek Chu
Eric Chu
Donato Cobarrubias
Amir Cohen

Gail Cohen
Laura Connelly
Eric Contreras
Jenna D'Ull
Dr. James A. Davis
Lauren de Rosas
Amanda Del Castillo
Sharjah Del Rosario
Daniel DeTrinidad
Frank Diaz
Henry Dombey
Patrick Dunne
Elaine Ehrman
Shirley and Ben Eisler
Hal Epstein
Daniel Erazo-Hernandez
Chris Estipona
Erica Evans
KiKi Faafu
Kelly Faddis
Sharon Fee
Alan Feren
Sam Ferguson
Michael Fernandez
Lynn Figueroa
Jessica Fisher
Alana Fong
Selina Fong
Drew Forrest
Victoria Fossett
Lois Fried
Kathleen Friedlander
David Friedman
Phyllis K. Friedman
Don Friend
Walter Fuchs
Gabrielle Fusco
Emilya Gaft
Lola Gambucci
Debbie Garcia
Rudy Garcia
Lisa Gardenhire
Gayle Geary
Maria Gerega
Peter Gleichenshaus
Mike Golden
Mitchell Goldenberg
David Goldstein
Kyle Graycar
Francis Green
Johnny Greene
Milton Greenfield
Irina Grigorian
Jose Guardado
Monika Gucwa
Sara Haber
Jan Halson
Francine Hamment
Debra Reynolds
and Steven Hammerschlag
Judy Hanson
Lisa Harbus
Marcia Hastings
Eda He
Gayle and Josef Helwani
Leo Herrera
Carol Hicks
Lois Hillman
Marjorie Hilsenrad
Josephine Holsher
Christina Hom
Rudy Hooremans
Bobbie Horowitz
Kei Hoshino
Gloria Houtenbrink

Liana Huang
Wesley Huang
Kelly Huynh
Alona Jasik
Briana Johnson
Adrienne Jonas
Danielle Juarez
Susan Julius
Kate Kalinowski
Linda Kalinowski
Jeff Kanbar
Pamela Kane
Doug Kaplan
Robin Karp
Sam Karp
Regina Karson
David Kaskowitz
Marty Kassman
Laura Kaufman
Olga Kay
Lillian Klein
Marilyn Kline
Len Knyper
Sandy Komin
Sylvia Korn
Oleg Korsunsky
Scott Kravitz
Arlene Krieger
Edna Lachar
Anna Lalaind
Sandy Larsen
Greg Lawrence
Allan Leader
Kari Leblovic
Sheila Lederer
Barbara Leff
Nicholas Leung
Greg LeVasseur
Helene Levy
Jeffrey Lilly
Gaspara Lim
Bonnie Lindauer
Herman Liu
Anjelica Lopez
Eduardo Lopez
Monica Lopez
Mary Lotti
Jamie Louie
Sirena Louie
Tiffany Louie
Vincent Louie
Yee Ting Louie
Ben Lubitz
Dennis Lubitz
Paul Lubitz
John Ludovice
Helen Luey
Louis Lurati
Leonid Lurye
Alex Lushtak
Ermina Manalang
Greg Mand
Janelle Manggana
Vicajean Manuel
Verne Marcaida
Esther Marcus
Victor L. Marcus
Gerry Mariano
Zoe Marmer
Martin Marquez
Monica Marquez
Dulce Martinez
Evelyn Martinez
Jamie Mateo
Virginia Matthews

Elizabeth McAndrew
Shaun McGrath
Jordan Medina
Romalynn Mejia
Viviana Mendoza
Anna Mercado
Jane Merschen
Yevgeniya Mikheyeva
Chris Mingau
Janis Mitchell
Stephen Mittel
Linda Mogel
Tatiana Montenegro
Scott Montgomery
Melanie Montoya
Rae Morgenstein
Joy Mun
Jazmine Munoz
Mark Myers
Daniel Nemirovsky
Peter Neubauer
Bela Newman
Kylie Ng
Shirley Nicdao
Shirley Nice
Marleen Norman
Elaine O'Donoghue
Diane Olmstead
Jack Orovitz
Mark Pablico
Young Mi Pak
Neliza Pallesco
Christmarie Pangan
Yeoun Park
Clara Pereira
Fortunata Perez
Ricky Perez Jr.
Betty Perry
Jimmy Pham
Margot Pierluissi
David Polhemus
Peter A. Pollat, M.D.
Virginia Prince
Andres Quesada-Galvan
Eli Rakity
Jeff Ravetto
Rob Reicher
Aidan Reitzes
Rasma Rekschans
Nathan Retzlaff
Elvie Rimon
Ralph Rioja
Carol S. Roberts
Cynthia Robinson
Nathan Robinson
Barbara C. Rosenberg
Ruth Ann Rosenberg
Susan Rosenberg
Isadore Rosenthal
Sheldon Rosenthal
Harry Rossit
Niki Rothman
Kate Rowland
Genya Roymann
Lesley Ruda
Stephen Sabagquit
Edith Sadewitz
Katy Safer
Myint Saing
Vivian San
Elianna Sanchez
Francesca Santos
Patricia Santos
Stephanie Saravia
Malika Schleyer

Ida E. Schwartz
Yakov Schwartz
Regina Scolaro
Maria Sebastian
Janis Seeman
Debra Seibel
Mary Sejane
Linda Semi
Violeta and Robert Shelly
Paul Shkuratov
Hyun Shon
Claire Shor
Shira Shore
Sue Siegel
Jordan Sills
Alan Silverman
Jaimie Simon
Roger Sinasohn
Sean Sison
Estella Smart
Joel Smith
Stephen Sperber
Rob Spiro
Taje Springfield
Andrew Sprinkles
Mariya Starikova
Eric Steger
Carla Suarez
Marilyn Sugar
Mark Sugarman
Raisa Sullivan
Karen Sunga
Stephen Tam
Sharna Tang
Audrey Tatsuno
Abby Teisch
Rebecca Tokarchuk
Karen Tom
Anthony Trainor
Thia Tran
Mary Treuhaft
Tashi Tsomo
Wing Tsui
Calvin Tuong
Phillip Tynam
Anthony Urbina
Esti Uziel
Yelena Vaksman
Jacob Valdiviezo
Leticia Valencia
Arkady Vayntrub
Gabriel Velasco
Ralph Villamor
Larisa Vinnitskaya
Liza Volansky
Rita Volkovinskaya
Izabella Vurgaft
Camille Walsh
Elliott Warshawer
Alan Warshaw
Erica Watts
Abraham Wazirl
Nina Weil
Lillian Wein
Lora Weiner
Lila Whitehead
Cecile E. Winton
Lindy Wolf
Barbara Wood
Andrea Wright
Mary Xu
Sofiya Yakhnin
Sean Yates
Anthony Ynami
Shane Yost
Alex Yu
Jennifer and Nancy Yu
Nirit Zach-Peri
Alice Ziegler
Joshua Zukerman

GIFTS IN KIND

THE FOLLOWING INDIVIDUALS, BUSINESSES, AND ORGANIZATIONS HAVE CONTRIBUTED GOODS AND SERVICES TO THE JEWISH HOME OF SAN FRANCISCO FROM JULY 1, 2007, THROUGH JUNE 30, 2008. WE SINCERELY APPRECIATE THEIR SUPPORT.

122 West Winery
Patty and Benjamin Anixter
Solomon Babchin
Pamela and Larry Baer
and the San Francisco Giants
Robert L. Baker
Peggy Dover and Phil Barnett
Bay Cities Produce
William and Jonathan Blum
Rebecca A. Blumen
Charlie and Herb Brown
Marian and Allan Byer
Ruth Callmann
Irene Cherniss
The Claremont Resort & Spa
Marna Clark
Coco-luxe Confections
Lauren Colloff
Contemporary Jewish Museum
Amy and Scott Darling
Drs. Claire T. and James A. Davis
Peg and Roy Davis

Helen and Sanford Diller
Sandra and Edwin Epstein
Lina and Victor Eydus
Rebecca Arons and Eric B. Fastiff
Bonnie and Wesley Fastiff
Howard Fleishman
Janie and Don Friend
Lola Gambucci
Nancie and Sanford Garfinkel
Girl Friday Event Production
Joann Glaser
Mindy Goldman
Dick Goodwin
Janice Schwartz and Jerry Griffen
Jack Harris
Estella Hayden
Carolyn Helmke
Faye and Edward Hirschberg
Marsha M. Jacobs
JC Cellars
Jewish Community Center
of San Francisco
Deborah Ju
Leonid Kaganovich
Marilyn Krassner
Carolyn Kurtz
Mary Lamb
Cynthia Lee
Louise Bird and Jeffrey Leibovitz
Lexus Champions
for Charity/Octagon
Sherman B. Lieberman
Deborah Kaufman and Idrees Malik
Michael Mina
Pebble Beach Company
Peninsula Golf & Country Club
Photography By Delgado
Peter A. Pollat, M.D.
Pratesi Linens
Ruth Roberts
Judith Cohen Roffman
San Francisco Opera
Helen W. Schwartz
See's Candies
Jennifer Serafin
Suzanne and Theodore Seton
Myra Shapiro
Ellie and Alvin Silver
Solid Impact Golf Performance
Judith Szpiro
Sue Tate
Alex Treyger
Jerome Weitz

OUR COMMUNITY PARTNERS



THE JEWISH HOME PARTNERS WITH LOCAL HIGH SCHOOLS, WITH THE MUTUAL GOAL OF INVOLVING YOUTH IN THEIR COMMUNITY, PROMOTING CIVIC RESPONSIBILITY, AND DEVELOPING LEADERSHIP SKILLS.

WE GRATEFULLY ACKNOWLEDGE THE FOLLOWING COMMUNITY ORGANIZATIONS, AGENCIES, AND FACILITIES WHOSE ACTIVE INVOLVEMENT AND COLLABORATION DURING THE PAST YEAR HAVE GREATLY ENHANCED THE CARE, PROGRAMS, AND SERVICES OFFERED BY THE JEWISH HOME OF SAN FRANCISCO.

Aging Services of California
Albert L. Schultz Jewish Community
Center of Palo Alto
Alzheimer's Association of the
Greater San Francisco Bay Area
American Association of Homes
& Services for the Aging
American College of
Traditional Chinese Medicine
American Jewish Committee of the
San Francisco Bay Area
American Society on Aging
Archbishop Riordan High School
Association of Geriatric
Care Managers
Association of Jewish Aging Services
Bay Area Bar Mitzvah Corps
Bay Area Cluster Group of Professional
Geriatric Care Managers
Bay Area Jewish Healing Center
Bay Area Social Workers
In Health Care
Brandeis Hillel Day School
Brandeis Hillel Girl Scouts
Bread & Roses
California Pacific Medical Center
Case Management Society of America
City College of San Francisco
Congregation B'Nai Emonah
Congregation Beth Am
Congregation Beth Israel-Judea
Congregation Beth Sholom
Congregation Emanu-El

Congregation Kol Shofar
Congregation Ner Tamid
Congregation Rodef Sholom
Congregation Sha'ar Zahav
Congregation Sherith Israel
Contemporary Jewish Museum
David Jacobson School of Music
Dominican University
Employment Plus
Excelsior Neighborhood
Commercial Revitalization
Family Service Agency of San
Francisco - Senior Companion
Program
Fromm Institute
Galileo Health Academy
Heald College
Hebrew Care-a-Van
Hebrew Free Loan Teen
Fellowship Program
Hebrew Union College
- Jewish Institute of Religion
Hotel Employees and Restaurant
Employees Union Local 2
Institute on Aging
IUOE Stationary Engineers Local 39
j. (formerly the Jewish Bulletin)
Jewish Community Center
of San Francisco
Jewish Community Endowment Fund
Jewish Community Federation
Jewish Family and Children's Services
Jewish High School of the Bay

Jewish Vocational Service
Jewish War Veterans
Kaiser Permanente
Kalsman Institute on Judaism
and Health
KQED Public Broadcasting
Education Network
Kung Pao Kosher Comedy
League of Women Voters
Lehrhaus Judaica
Local Independent Charities
of America
Mayer-Kalsman Fellows
Mayor's Youth Employment
and Education Program
Menorah Park
Mercy High School
Montefiore Senior Center
National Association for Visually
Handicapped
National Federation of Temple Youth
Northern California Jewish Sports
Hall of Fame
On Lok, inc.
Ocean Beach Veterinary Clinic
PBS-TV
Peninsula Jewish Community Center
Peninsula Temple Sholom
Phillip Burton High School
Private Industry Council
of San Francisco
Professional Grief Caregivers Network
Project ACHIEVE

Retired Seniors Volunteer Program
Rhoda Goldman Plaza
Samuel Merritt College
San Francisco Bioethics Committee
San Francisco Conservatory of Music
San Francisco Department
of Public Health
San Francisco Hillel
San Francisco Jewish Film Festival
San Francisco Senior Roundtable
San Francisco SPCA
San Francisco State University
San Jose State University
SEIU United Healthcare Workers West
Sisterhood of Congregation
Beth Israel-Judea
Sonoma Valley Hospital
Taube Koret Campus for Jewish Life
Temple Beth El
Union for Reform Judaism
United Synagogue Youth
University of California at Berkeley
University of California at Davis
University of California
at San Francisco
University of San Francisco
ViBO Music School
United Way of the Bay Area
Volunteer Match
Zen Hospice Project



STARS

A JEWISH HOME CENTER OF EXCELLENCE
SHORT-TERM AND REHABILITATION SERVICES

The same high standards of interdisciplinary care and services available to residents of the Jewish Home are offered to those requiring short-term specialized medical and rehabilitation services, usually following their stay in an acute hospital, with the goal of returning to the general community.

STARS patients benefit from our comprehensive services, including management by physicians, nursing and therapeutic staff. Admission is not limited by religious or cultural affiliation.

We are proud of STARS, our new Jewish Home center of excellence, and invite you to learn more at www.jhsf.org/stars

ON THE WEB

JEWISH HOME OF SAN FRANCISCO

Enjoy our new website! Take a visual tour through our nine-acre campus. Read about our comprehensive services for seniors. Learn how you can lend a helping hand by joining our corps of volunteers. Discover what is new in our research department at www.jhsf.org

E-NEWSLETTER

Regular communications for the latest developments at the Jewish Home of San Francisco; Jewish Home & Senior Living Foundation; Moldaw Family Residences at 899 Charleston; Taube Koret Campus for Jewish Life; strategic visioning; corporate matters. Read about trends and issues related to research and senior living. Join our list: go to www.jhsf.org/e-news

JEWISH HOME & SENIOR LIVING FOUNDATION

Established in 2004, this charitable foundation promotes and supports the mission and activities associated with the Jewish Home of San Francisco and network affiliates. The Foundation provides the Jewish Home with the funding it needs to continue its commitment to serve seniors as they age. Visit the Foundation's new website, where you may take advantage of the opportunity to donate online. www.jhslf.org

MOLDAW FAMILY RESIDENCES AT 899 CHARLESTON

To view the construction gallery of this dynamic and progressive senior living community being built on the Taube Koret Campus for Jewish Life on the South Peninsula in Palo Alto, and get the dates of upcoming events and seminars, go to www.899charleston.org

COMING UP:

We are going *Back to Our Roots* at the Jewish Home's annual Chanukah show – a musical revue showcasing residents' talent. Community show date and time is available at www.jhsf.org/chanukah

